

System Performance Check Report for D5GHzV2 - SN1003

Exposure Conditions

Frequency [MHz]   Channel Number	5750.000   0	TSL Permittivity	34.4
Group   UID	CW   0--	TSL Conductivity [S/m]	5.17
Conversion Factor	4.78	Phantom Section   TSL	Flat   HSL

Hardware Setup

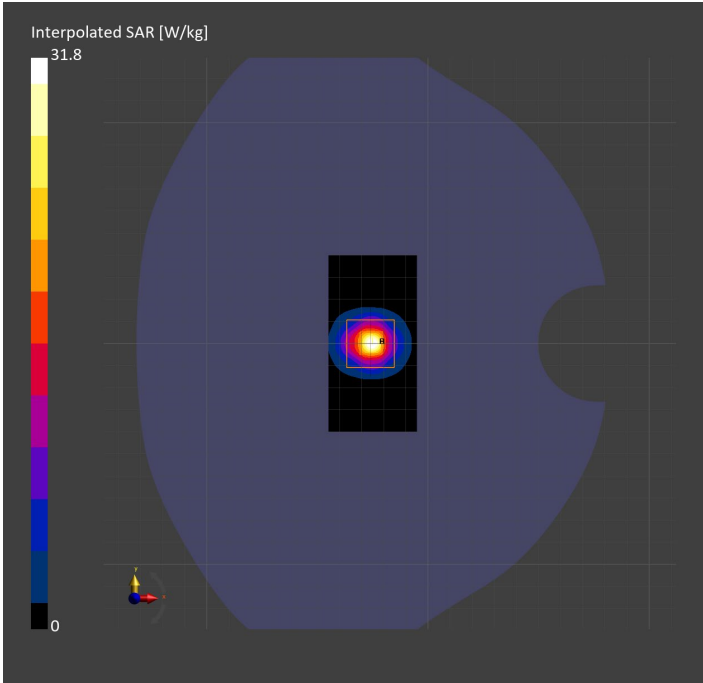
Probe   Calibration Date	EX3DV4 - SN3772   2023-02-13	Phantom	Twin-SAM V8.0 (30deg probe tilt)
DAE   Calibration Date	DAE4 Sn1359   2023-01-24	TSL Type	HBBL-600-10000
Software Version	16.2.4.2524		

Scans Setup

	Area Scan	Zoom Scan
Grid Extents [mm]	40.0 x 80.0	22.0 x 22.0 x 22.0
Grid Steps [mm]	10.0 x 10.0	4.0 x 4.0 x 1.4
Sensor Surface [mm]	3.0	1.4
Graded Grid	N/A	Yes
M2/M1 [%]		59.7
Dist 3dB Peak [mm]		7.2

Measurement Results

	Area Scan	Zoom Scan
psSAR1g [W/Kg]	6.75	7.25
psSAR10g [W/Kg]	1.92	2.05
Power Drift [dB]	N/A	0.03



System Performance Check Report for D2450V2 - SN706

Exposure Conditions

Frequency [MHz]   Channel Number	2450.000   0	TSL Permittivity	40.0
Group   UID	CW   0--	TSL Conductivity [S/m]	1.82
Conversion Factor	7.33	Phantom Section   TSL	Flat   HSL

Hardware Setup

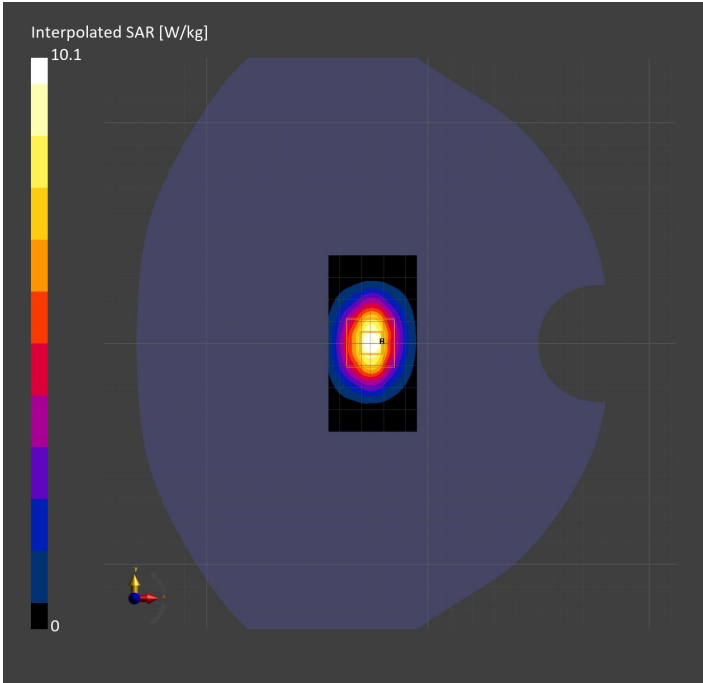
Probe   Calibration Date	EX3DV4 - SN3772   2023-02-13	Phantom	Twin-SAM V8.0 (30deg probe tilt)
DAE   Calibration Date	DAE4 Sn1359   2023-01-24	TSL Type	HBBL-600-10000
Software Version	16.2.4.2524		

Scans Setup

	Area Scan	Zoom Scan
Grid Extents [mm]	40.0 x 80.0	30.0 x 30.0 x 30.0
Grid Steps [mm]	10.0 x 10.0	5.0 x 5.0 x 1.5
Sensor Surface [mm]	3.0	1.4
Graded Grid	N/A	Yes
M2/M1 [%]		81.1
Dist 3dB Peak [mm]		9.0

Measurement Results

	Area Scan	Zoom Scan
psSAR1g [W/Kg]	4.97	<b>4.98</b>
psSAR10g [W/Kg]	2.31	<b>2.32</b>
Power Drift [dB]	N/A	0.01



System Performance Check Report for D5GHzV2 - SN1138

Exposure Conditions

Frequency [MHz]   Channel Number	5250.000   0	TSL Permittivity	35.1
Group   UID	CW   0--	TSL Conductivity [S/m]	4.58
Conversion Factor	5.14	Phantom Section   TSL	Flat   HSL

Hardware Setup

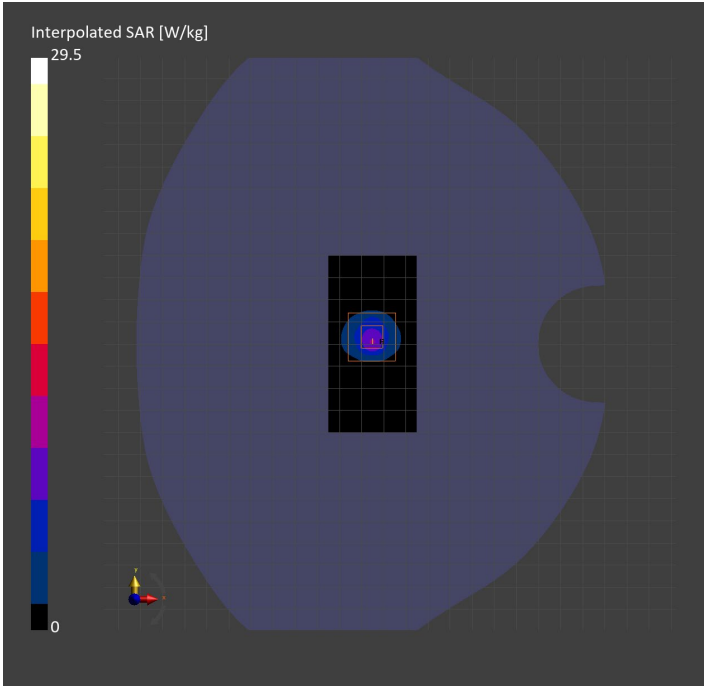
Probe   Calibration Date	EX3DV4 - SN3773   2023-02-13	Phantom	Twin-SAM V5.0 (30deg probe tilt)
DAE   Calibration Date	DAE4 Sn1258   2023-03-16	TSL Type	HBBL-600-10000
Software Version	16.2.4.2524		

Scans Setup

	Area Scan	Zoom Scan
Grid Extents [mm]	40.0 x 80.0	22.0 x 22.0 x 22.0
Grid Steps [mm]	10.0 x 10.0	4.0 x 4.0 x 1.4
Sensor Surface [mm]	3.0	1.4
Graded Grid	N/A	Yes
M2/M1 [%]		63.6
Dist 3dB Peak [mm]		7.2

Measurement Results

	Area Scan	Zoom Scan
psSAR1g [W/Kg]	6.49	7.46
psSAR10g [W/Kg]	1.94	2.15
Power Drift [dB]	N/A	0.02



System Performance Check Report for D2450V2 - SN899

Exposure Conditions

Frequency [MHz]   Channel Number	2450.000   0	TSL Permittivity	40.6
Group   UID	CW   0--	TSL Conductivity [S/m]	1.74
Conversion Factor	7.64	Phantom Section   TSL	Flat   HSL

Hardware Setup

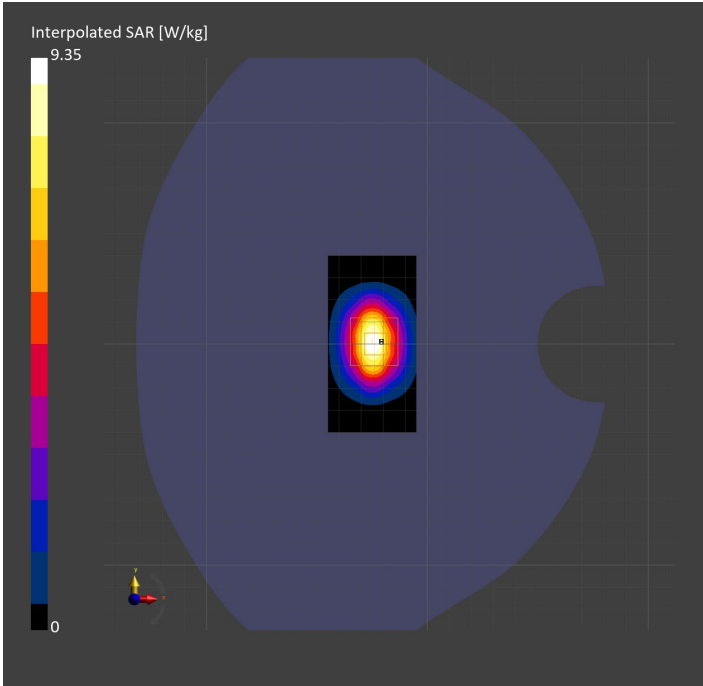
Probe   Calibration Date	EX3DV4 - SN7587   2023-04-18	Phantom	Twin-SAM V8.0 (30deg probe tilt)
DAE   Calibration Date	DAE4 Sn1239   2023-03-16	TSL Type	HBBL-600-10000
Software Version	16.2.4.2524		

Scans Setup

	Area Scan	Zoom Scan
Grid Extents [mm]	40.0 x 80.0	30.0 x 30.0 x 30.0
Grid Steps [mm]	10.0 x 10.0	5.0 x 5.0 x 1.5
Sensor Surface [mm]	3.0	1.4
Graded Grid	N/A	Yes
M2/M1 [%]		81.3
Dist 3dB Peak [mm]		9.0

Measurement Results

	Area Scan	Zoom Scan
psSAR1g [W/Kg]	4.65	4.73
psSAR10g [W/Kg]	2.16	2.26
Power Drift [dB]	N/A	0.01



# System Performance Check Report for D5GHzV2 - SN1138

## Exposure Conditions

Frequency [MHz]   Channel Number	5250.000   0	TSL Permittivity	36.3
Group   UID	CW   0--	TSL Conductivity [S/m]	4.55
Conversion Factor	5.59	Phantom Section   TSL	Flat   HSL

## Hardware Setup

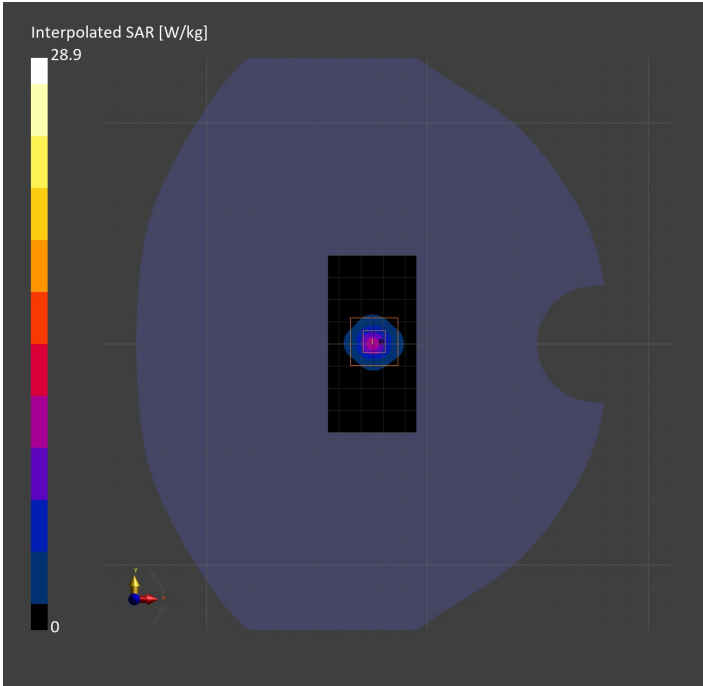
Probe   Calibration Date	EX3DV4 - SN3929   2023-04-26	Phantom	Twin-SAM V5.0 (30deg probe tilt)
DAE   Calibration Date	DAE4 Sn1675   2023-05-11	TSL Type	HBBL-600-10000
Software Version	16.2.4.2524		

## Scans Setup

	Area Scan	Zoom Scan
Grid Extents [mm]	40.0 x 80.0	22.0 x 22.0 x 22.0
Grid Steps [mm]	10.0 x 10.0	4.0 x 4.0 x 1.4
Sensor Surface [mm]	3.0	1.4
Graded Grid	N/A	Yes
M2/M1 [%]		63.9
Dist 3dB Peak [mm]		7.4

## Measurement Results

	Area Scan	Zoom Scan
psSAR1g [W/Kg]	6.78	7.23
psSAR10g [W/Kg]	1.92	2.06
Power Drift [dB]	N/A	-0.00



System Performance Check Report for D5GHzV2 - SN1138

Exposure Conditions

Frequency [MHz]   Channel Number	5250.000   0	TSL Permittivity	35.0
Group   UID	CW   0--	TSL Conductivity [S/m]	4.48
Conversion Factor	5.59	Phantom Section   TSL	Flat   HSL

Hardware Setup

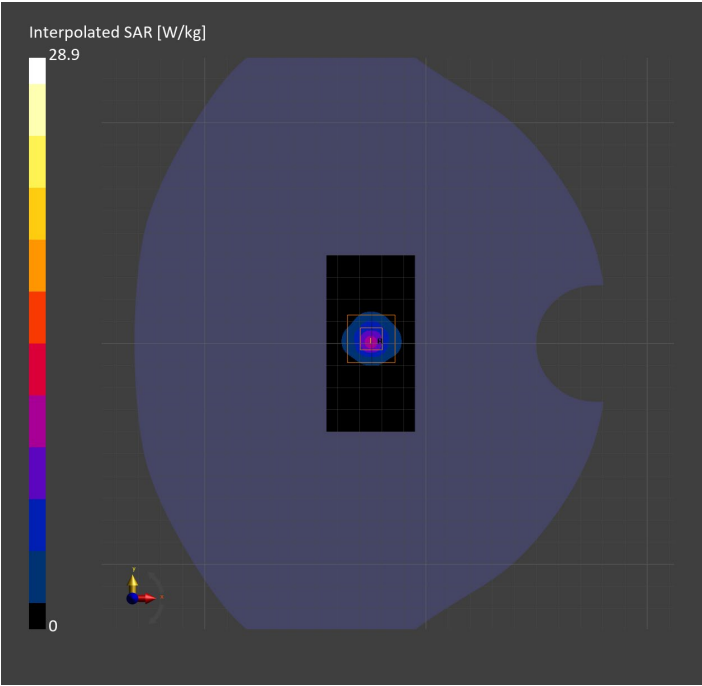
Probe   Calibration Date	EX3DV4 - SN3929   2023-04-26	Phantom	Twin-SAM V5.0 (30deg probe tilt)
DAE   Calibration Date	DAE4 Sn1675   2023-05-11	TSL Type	HBBL-600-10000
Software Version	16.2.4.2524		

Scans Setup

	Area Scan	Zoom Scan
Grid Extents [mm]	40.0 x 80.0	22.0 x 22.0 x 22.0
Grid Steps [mm]	10.0 x 10.0	4.0 x 4.0 x 1.4
Sensor Surface [mm]	3.0	1.4
Graded Grid	N/A	Yes
M2/M1 [%]		63.9
Dist 3dB Peak [mm]		7.4

Measurement Results

	Area Scan	Zoom Scan
psSAR1g [W/Kg]	6.74	7.23
psSAR10g [W/Kg]	1.93	2.06
Power Drift [dB]	N/A	-0.03



System Performance Check Report for D5GHzV2 - SN1003

Exposure Conditions

Frequency [MHz]   Channel Number	5250.000   0	TSL Permittivity	36.3
Group   UID	CW   0--	TSL Conductivity [S/m]	4.48
Conversion Factor	5.59	Phantom Section   TSL	Flat   HSL

Hardware Setup

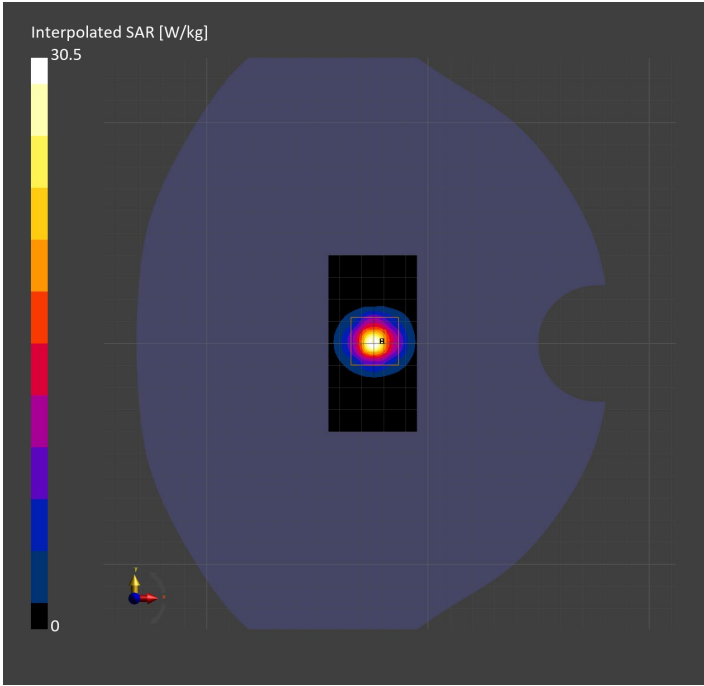
Probe   Calibration Date	EX3DV4 - SN3929   2023-04-26	Phantom	Twin-SAM V5.0 (30deg probe tilt)
DAE   Calibration Date	DAE4 Sn1675   2023-05-11	TSL Type	HBBL-600-10000
Software Version	16.2.4.2524		

Scans Setup

	Area Scan	Zoom Scan
Grid Extents [mm]	40.0 x 80.0	22.0 x 22.0 x 22.0
Grid Steps [mm]	10.0 x 10.0	4.0 x 4.0 x 1.4
Sensor Surface [mm]	3.0	1.4
Graded Grid	N/A	Yes
M2/M1 [%]		63.8
Dist 3dB Peak [mm]		7.2

Measurement Results

	Area Scan	Zoom Scan
psSAR1g [W/Kg]	7.16	7.61
psSAR10g [W/Kg]	2.04	2.16
Power Drift [dB]	N/A	0.01



# System Performance Check Report for D5GHzV2 - SN1168

## Exposure Conditions

Frequency [MHz]   Channel Number	5600.000   0	TSL Permittivity	35.7
Group   UID	CW   0--	TSL Conductivity [S/m]	4.86
Conversion Factor	4.46	Phantom Section   TSL	Flat   HSL

## Hardware Setup

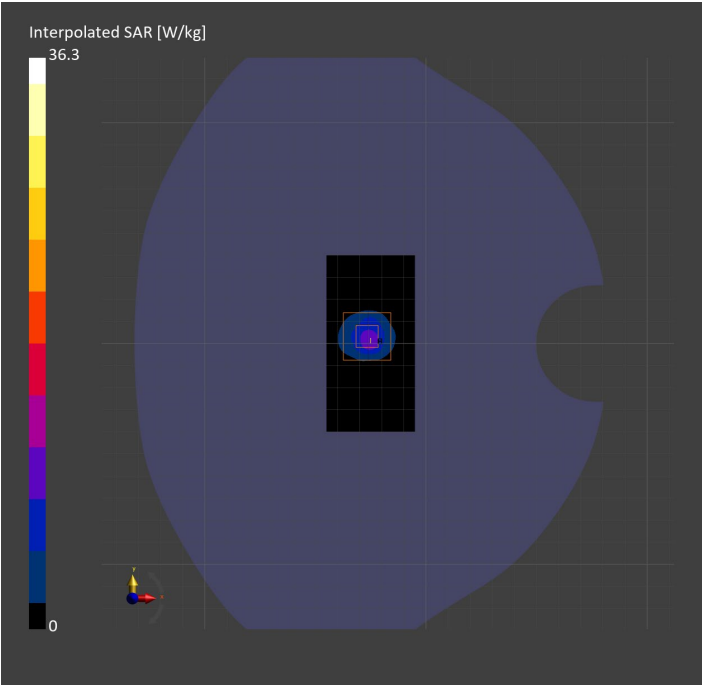
Probe   Calibration Date	EX3DV4 - SN7585   2023-04-18	Phantom	Twin-SAM V5.0 (30deg probe tilt)
DAE   Calibration Date	DAE4 Sn1259   2023-03-13	TSL Type	HBBL-600-10000
Software Version	16.2.4.2524		

## Scans Setup

	Area Scan	Zoom Scan
Grid Extents [mm]	40.0 x 80.0	22.0 x 22.0 x 22.0
Grid Steps [mm]	10.0 x 10.0	4.0 x 4.0 x 1.4
Sensor Surface [mm]	3.0	1.4
Graded Grid	N/A	Yes
M2/M1 [%]		61.7
Dist 3dB Peak [mm]		7.2

## Measurement Results

	Area Scan	Zoom Scan
psSAR1g [W/Kg]	7.62	8.66
psSAR10g [W/Kg]	2.26	2.45
Power Drift [dB]	N/A	-0.01



System Performance Check Report for D5GHzV2 - SN1138

Exposure Conditions

Frequency [MHz]   Channel Number	5600.000   0	TSL Permittivity	35.7
Group   UID	CW   0--	TSL Conductivity [S/m]	4.95
Conversion Factor	4.46	Phantom Section   TSL	Flat   HSL

Hardware Setup

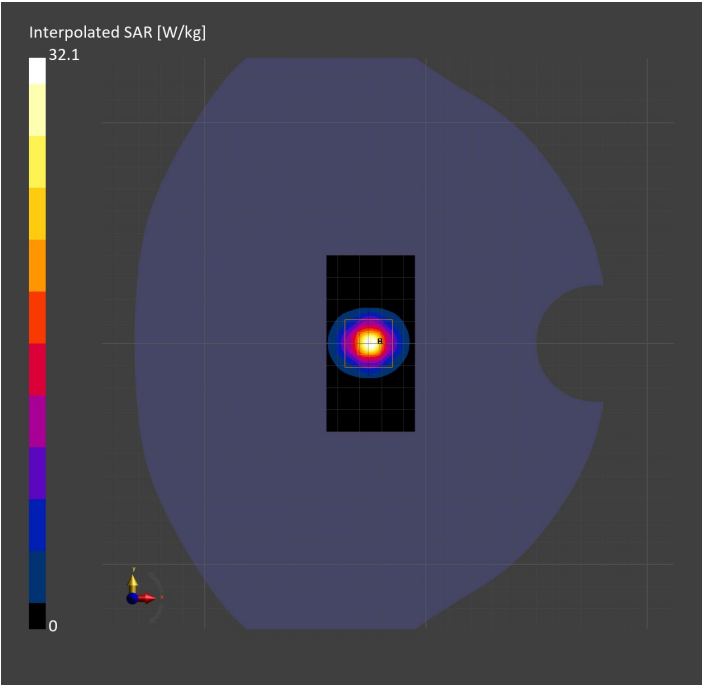
Probe   Calibration Date	EX3DV4 - SN7585   2023-04-18	Phantom	Twin-SAM V5.0 (30deg probe tilt)
DAE   Calibration Date	DAE4 Sn1259   2023-03-13	TSL Type	HBBL-600-10000
Software Version	16.2.4.2524		

Scans Setup

	Area Scan	Zoom Scan
Grid Extents [mm]	40.0 x 80.0	22.0 x 22.0 x 22.0
Grid Steps [mm]	10.0 x 10.0	4.0 x 4.0 x 1.4
Sensor Surface [mm]	3.0	1.4
Graded Grid	N/A	Yes
M2/M1 [%]		61.8
Dist 3dB Peak [mm]		6.9

Measurement Results

	Area Scan	Zoom Scan
psSAR1g [W/Kg]	7.10	7.55
psSAR10g [W/Kg]	1.99	2.13
Power Drift [dB]	N/A	-0.01



System Performance Check Report for D5GHzV2 - SN1138

Exposure Conditions

Frequency [MHz]   Channel Number	5600.000   0	TSL Permittivity	35.6
Group   UID	CW   0--	TSL Conductivity [S/m]	4.85
Conversion Factor	4.46	Phantom Section   TSL	Flat   HSL

Hardware Setup

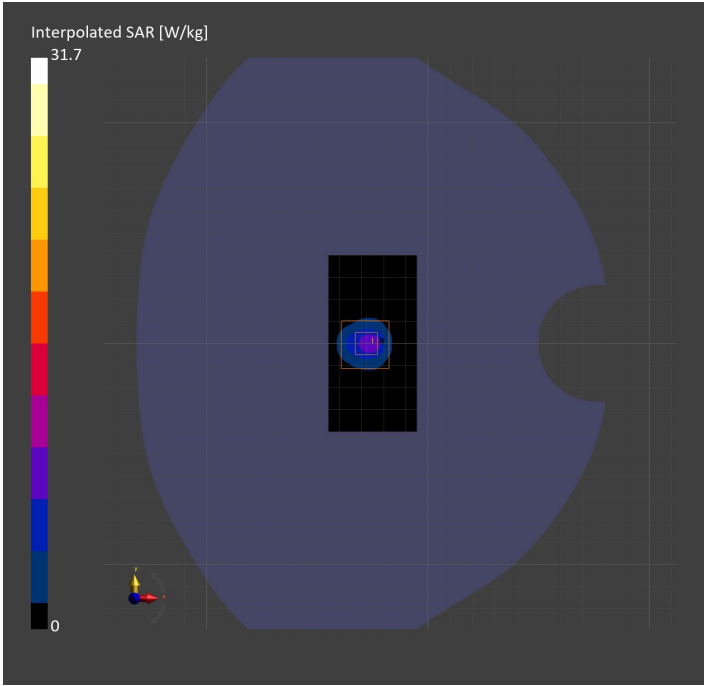
Probe   Calibration Date	EX3DV4 - SN7585   2023-04-18	Phantom	Twin-SAM V5.0 (30deg probe tilt)
DAE   Calibration Date	DAE4 Sn1797   2023-04-03	TSL Type	HBBL-600-10000
Software Version	16.2.4.2524		

Scans Setup

	Area Scan	Zoom Scan
Grid Extents [mm]	40.0 x 80.0	22.0 x 22.0 x 22.0
Grid Steps [mm]	10.0 x 10.0	4.0 x 4.0 x 1.4
Sensor Surface [mm]	3.0	1.4
Graded Grid	N/A	Yes
M2/M1 [%]		61.8
Dist 3dB Peak [mm]		7.2

Measurement Results

	Area Scan	Zoom Scan
psSAR1g [W/Kg]	6.69	7.60
psSAR10g [W/Kg]	1.97	2.14
Power Drift [dB]	N/A	0.00



System Performance Check Report for D5GHzV2 - SN1168

Exposure Conditions

Frequency [MHz]   Channel Number	5750.000   0	TSL Permittivity	35.0
Group   UID	CW   0--	TSL Conductivity [S/m]	4.99
Conversion Factor	5.15	Phantom Section   TSL	Flat   HSL

Hardware Setup

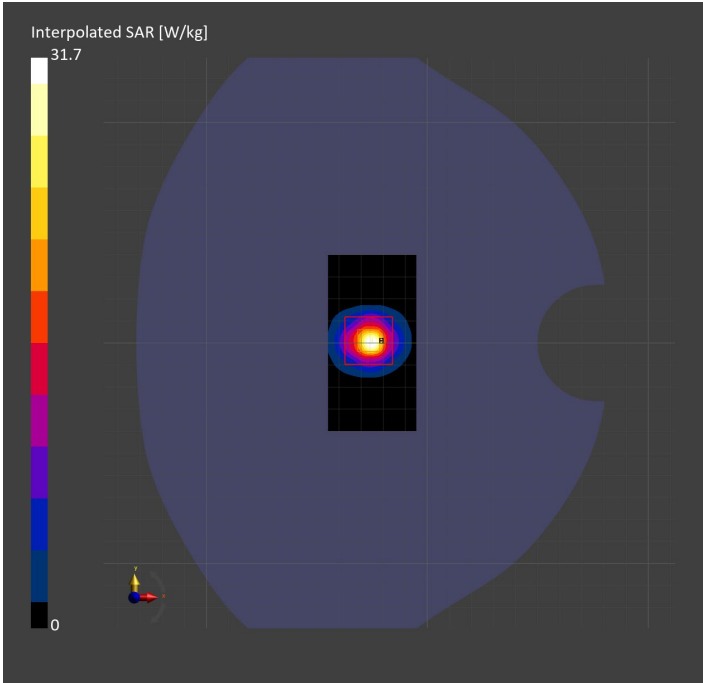
Probe   Calibration Date	EX3DV4 - SN3902   2023-03-17	Phantom	Twin-SAM V5.0 (30deg probe tilt)
DAE   Calibration Date	DAE4 Sn1439   2023-03-16	TSL Type	HBBL-600-10000
Software Version	16.2.4.2524		

Scans Setup

	Area Scan	Zoom Scan
Grid Extents [mm]	40.0 x 80.0	22.0 x 22.0 x 22.0
Grid Steps [mm]	10.0 x 10.0	4.0 x 4.0 x 1.4
Sensor Surface [mm]	3.0	1.4
Graded Grid	N/A	Yes
M2/M1 [%]		61.7
Dist 3dB Peak [mm]		7.4

Measurement Results

	Area Scan	Zoom Scan
psSAR1g [W/Kg]	6.90	7.42
psSAR10g [W/Kg]	1.99	2.13
Power Drift [dB]	N/A	0.03



System Performance Check Report for D5GHzV2 - SN1138

Exposure Conditions

Frequency [MHz]   Channel Number	5750.000   0	TSL Permittivity	35.6
Group   UID	CW   0--	TSL Conductivity [S/m]	5.15
Conversion Factor	5.15	Phantom Section   TSL	Flat   HSL

Hardware Setup

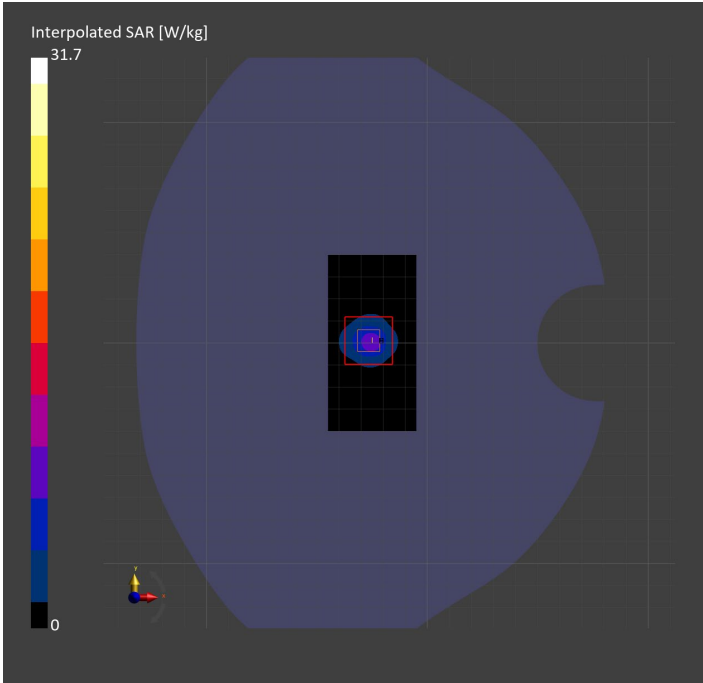
Probe   Calibration Date	EX3DV4 - SN3902   2023-03-17	Phantom	Twin-SAM V5.0 (30deg probe tilt)
DAE   Calibration Date	DAE4 Sn1439   2023-03-16	TSL Type	HBBL-600-10000
Software Version	16.2.4.2524		

Scans Setup

	Area Scan	Zoom Scan
Grid Extents [mm]	40.0 x 80.0	22.0 x 22.0 x 22.0
Grid Steps [mm]	10.0 x 10.0	4.0 x 4.0 x 1.4
Sensor Surface [mm]	3.0	1.4
Graded Grid	N/A	Yes
M2/M1 [%]		60.5
Dist 3dB Peak [mm]		7.2

Measurement Results

	Area Scan	Zoom Scan
psSAR1g [W/Kg]	6.65	7.24
psSAR10g [W/Kg]	1.92	2.06
Power Drift [dB]	N/A	0.02



System Performance Check Report for D2450V2 - SN706

Exposure Conditions

Frequency [MHz]   Channel Number	2450.000   0	TSL Permittivity	39.5
Group   UID	CW   0--	TSL Conductivity [S/m]	1.77
Conversion Factor	7.28	Phantom Section   TSL	Flat   HSL

Hardware Setup

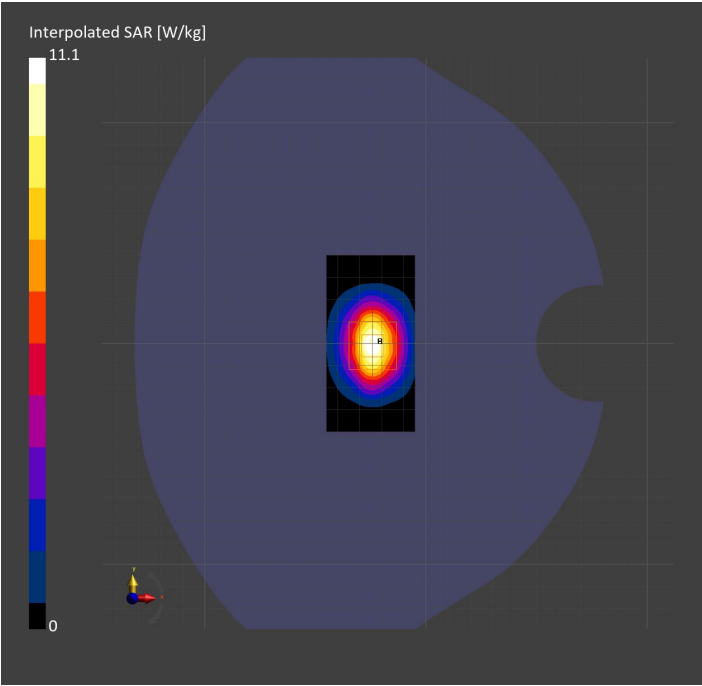
Probe   Calibration Date	EX3DV4 - SN7810   2023-04-25	Phantom	Twin-SAM V8.0 (30deg probe tilt)
DAE   Calibration Date	DAE4 Sn1797   2023-04-03	TSL Type	HBBL-600-10000
Software Version	16.2.4.2524		

Scans Setup

	Area Scan	Zoom Scan
Grid Extents [mm]	40.0 x 80.0	30.0 x 30.0 x 30.0
Grid Steps [mm]	10.0 x 10.0	5.0 x 5.0 x 1.5
Sensor Surface [mm]	3.0	1.4
Graded Grid	N/A	Yes
M2/M1 [%]		80.8
Dist 3dB Peak [mm]		9.0

Measurement Results

	Area Scan	Zoom Scan
psSAR1g [W/Kg]	5.54	5.54
psSAR10g [W/Kg]	2.61	2.64
Power Drift [dB]	N/A	-0.01



System Performance Check Report for D5GHzV2 - SN1138

Exposure Conditions

Band		TSL Permittivity	34.1
Frequency [MHz]   Channel Number	5750.000   0	TSL Conductivity [S/m]	5.12
Group   UID	CW   0--	Phantom Section   TSL	Flat   HSL
Conversion Factor	4.86	Test Distance [mm]	

Hardware Setup

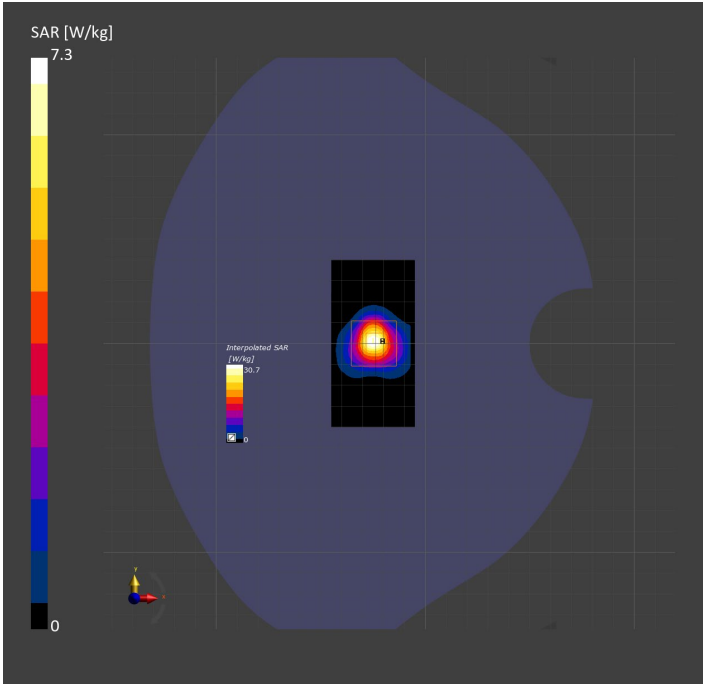
Probe   Calibration Date	EX3DV4 - SN7810   2023-04-25	Phantom	Twin-SAM V8.0 (30deg probe tilt)
DAE   Calibration Date	DAE4 Sn1797   2023-04-03	TSL Type	HBBL-600-10000
Software Version	16.2.4.2524		

Scan Setup

	Area Scan	Zoom Scan
Grid Extents [mm]	40.0 x 80.0	22.0 x 22.0 x 22.0
Grid Steps [mm]	10.0 x 10.0	4.0 x 4.0 x 1.4
Sensor Surface [mm]	3.0	1.4
Graded Grid	N/A	Yes
M2/M1 [%]		60.7
Dist 3dB Peak [mm]		7.4

Measurement Results

	Area Scan	Zoom Scan
psSAR1g [W/Kg]	6.77	7.31
psSAR10g [W/Kg]	1.94	2.11
Power Drift [dB]	N/A	-0.02



System Performance Check Report for D835V2 - SN4d002

Exposure Conditions

Frequency [MHz]   Channel Number	835.000   0	TSL Permittivity	41.9
Group   UID	CW   0--	TSL Conductivity [S/m]	0.899
Conversion Factor	7.83	Phantom Section   TSL	Flat   HSL

Hardware Setup

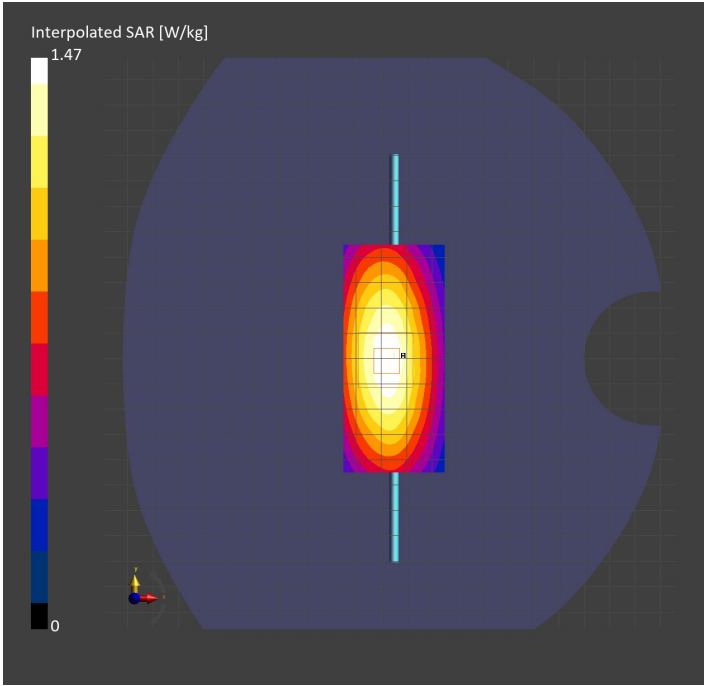
Probe   Calibration Date	EX3DV4 - SN3749   2023-01-27	Phantom	Twin-SAM V8.0 (30deg probe tilt)
DAE   Calibration Date	DAE4 Sn1357   2023-01-27	TSL Type	HBBL-600-10000
Software Version	16.2.4.2524		

Scans Setup

	Area Scan	Zoom Scan
Grid Extents [mm]	40.0 x 90.0	30.0 x 30.0 x 30.0
Grid Steps [mm]	10.0 x 15.0	6.0 x 6.0 x 1.5
Sensor Surface [mm]	3.0	1.4
Graded Grid	N/A	Yes
M2/M1 [%]		89.7
Dist 3dB Peak [mm]		16.4

Measurement Results

	Area Scan	Zoom Scan
psSAR1g [W/Kg]	1.03	1.01
psSAR10g [W/Kg]	0.683	0.674
Power Drift [dB]	N/A	-0.03



System Performance Check Report for D2600V2 - SN1036

Exposure Conditions

Frequency [MHz]   Channel Number	2600.000   0	TSL Permittivity	39.0
Group   UID	CW   0--	TSL Conductivity [S/m]	1.89
Conversion Factor	6.72	Phantom Section   TSL	Flat   HSL

Hardware Setup

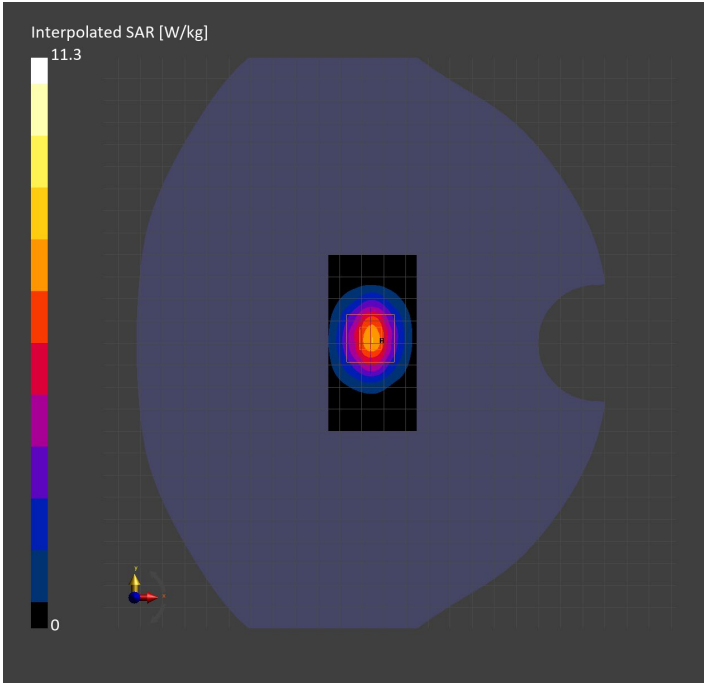
Probe   Calibration Date	EX3DV4 - SN3749   2023-01-27	Phantom	Twin-SAM V8.0 (30deg probe tilt)
DAE   Calibration Date	DAE4 Sn1357   2023-01-27	TSL Type	HBBL-600-10000
Software Version	16.2.4.2524		

Scans Setup

	Area Scan	Zoom Scan
Grid Extents [mm]	40.0 x 80.0	30.0 x 30.0 x 30.0
Grid Steps [mm]	10.0 x 10.0	5.0 x 5.0 x 1.5
Sensor Surface [mm]	3.0	1.4
Graded Grid	N/A	Yes
M2/M1 [%]		81.7
Dist 3dB Peak [mm]		9.0

Measurement Results

	Area Scan	Zoom Scan
psSAR1g [W/Kg]	5.67	5.68
psSAR10g [W/Kg]	2.56	2.62
Power Drift [dB]	N/A	-0.01



# System Performance Check Report for D1750V2 - SN1053

## Exposure Conditions

Frequency [MHz]   Channel Number	1750.000   0	TSL Permittivity	38.6
Group   UID	CW   0--	TSL Conductivity [S/m]	1.36
Conversion Factor	8.98	Phantom Section   TSL	Flat   HSL

## Hardware Setup

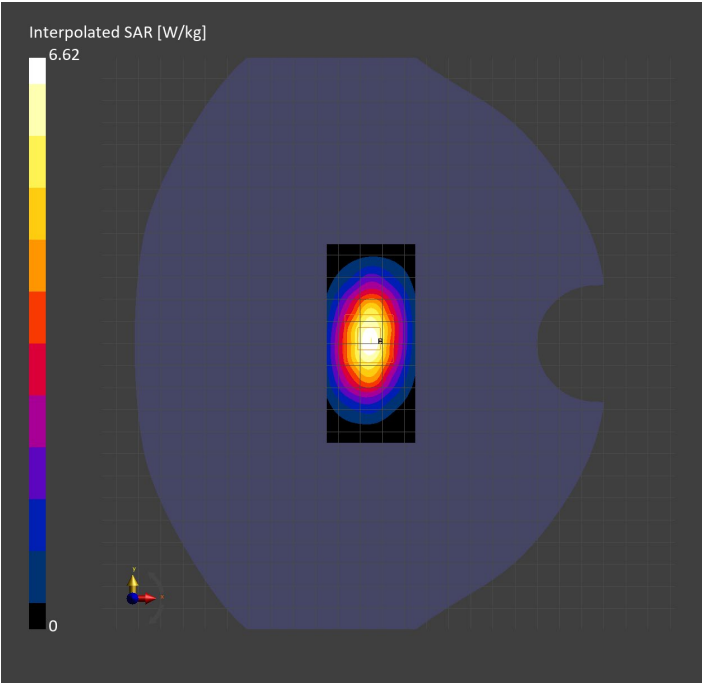
Probe   Calibration Date	EX3DV4 - SN3989   2023-01-26	Phantom	Twin-SAM V8.0 (30deg probe tilt)
DAE   Calibration Date	DAE4 Sn1257   2022-09-20	TSL Type	HBBL-600-10000
Software Version	16.2.4.2524		

## Scans Setup

	Area Scan	Zoom Scan
Grid Extents [mm]	40.0 x 90.0	30.0 x 30.0 x 30.0
Grid Steps [mm]	10.0 x 15.0	6.0 x 6.0 x 1.5
Sensor Surface [mm]	3.0	1.4
Graded Grid	N/A	Yes
M2/M1 [%]		83.8
Dist 3dB Peak [mm]		10.8

## Measurement Results

	Area Scan	Zoom Scan
psSAR1g [W/Kg]	3.74	3.71
psSAR10g [W/Kg]	2.01	2.01
Power Drift [dB]	N/A	0.00



System Performance Check Report for D3700V2 - SN1110

Exposure Conditions

Frequency [MHz]   Channel Number	3700.000   0	TSL Permittivity	39.1
Group   UID	CW   0--	TSL Conductivity [S/m]	3.00
Conversion Factor	6.94	Phantom Section   TSL	Flat   HSL

Hardware Setup

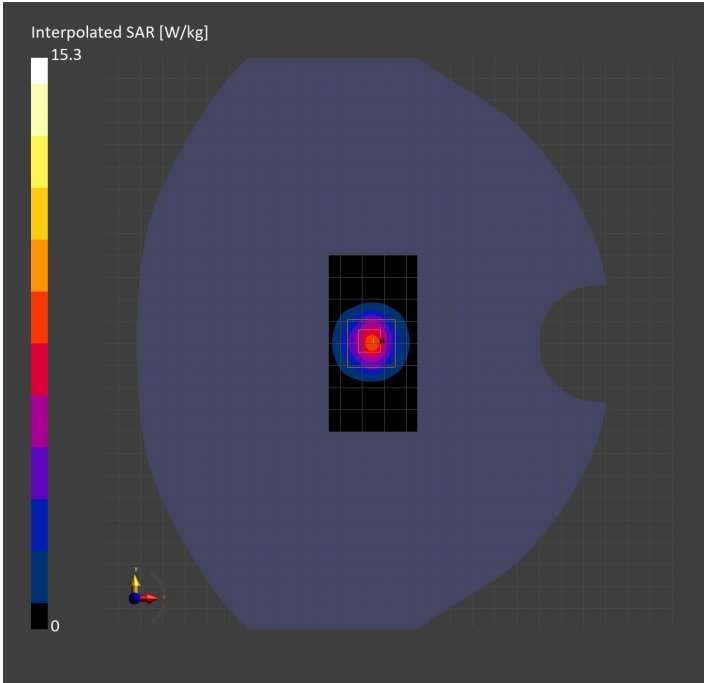
Probe   Calibration Date	EX3DV4 - SN3989   2023-01-26	Phantom	Twin-SAM V8.0 (30deg probe tilt)
DAE   Calibration Date	DAE4 Sn1257   2022-09-20	TSL Type	HBBL-600-10000
Software Version	16.2.4.2524		

Scans Setup

	Area Scan	Zoom Scan
Grid Extents [mm]	40.0 x 80.0	28.0 x 28.0 x 28.0
Grid Steps [mm]	10.0 x 10.0	5.0 x 5.0 x 1.4
Sensor Surface [mm]	3.0	1.4
Graded Grid	N/A	Yes
M2/M1 [%]		76.4
Dist 3dB Peak [mm]		9.0

Measurement Results

	Area Scan	Zoom Scan
psSAR1g [W/Kg]	5.90	5.99
psSAR10g [W/Kg]	2.20	2.27
Power Drift [dB]	N/A	-0.00



System Performance Check Report for D3500V2 - SN1011

Exposure Conditions

Frequency [MHz]   Channel Number	3500.000   0	TSL Permittivity	39.4
Group   UID	CW   0--	TSL Conductivity [S/m]	2.80
Conversion Factor	6.78	Phantom Section   TSL	Flat   HSL

Hardware Setup

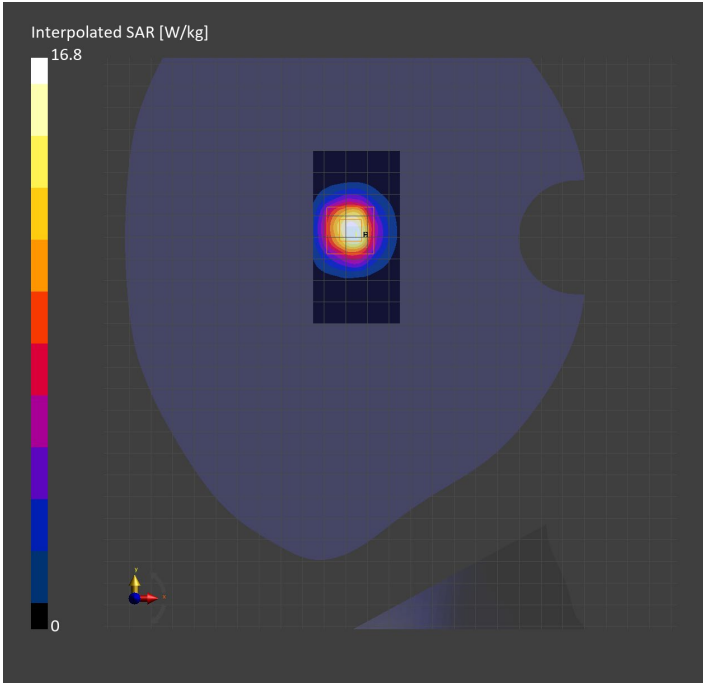
Probe   Calibration Date	EX3DV4 - SN3989   2023-01-26	Phantom	Twin-SAM V8.0 (30deg probe tilt)
DAE   Calibration Date	DAE4 Sn1257   2022-09-20	TSL Type	HBBL-600-10000
Software Version	16.2.4.2524		

Scans Setup

	Area Scan	Zoom Scan
Grid Extents [mm]	40.0 x 80.0	28.0 x 28.0 x 28.0
Grid Steps [mm]	10.0 x 10.0	5.0 x 5.0 x 1.4
Sensor Surface [mm]	3.0	1.4
Graded Grid	N/A	Yes
M2/M1 [%]		77.4
Dist 3dB Peak [mm]		9.0

Measurement Results

	Area Scan	Zoom Scan
psSAR1g [W/Kg]	6.46	6.86
psSAR10g [W/Kg]	2.61	2.70
Power Drift [dB]	N/A	0.02



System Performance Check Report for D1640V2 - SN334

Exposure Conditions

Frequency [MHz]   Channel Number	1640.000   0	TSL Permittivity	41.3
Group   UID	CW   0--	TSL Conductivity [S/m]	1.25
Conversion Factor	8.86	Phantom Section   TSL	Flat   HSL

Hardware Setup

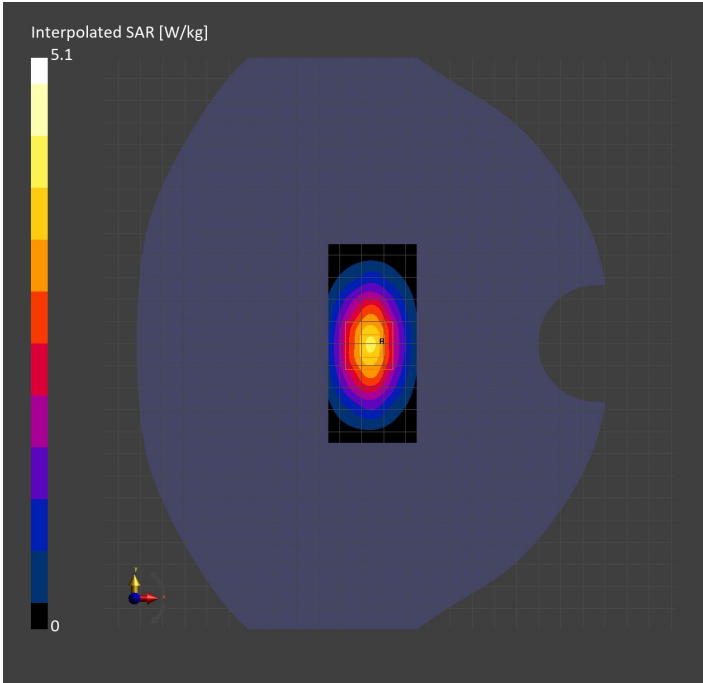
Probe   Calibration Date	EX3DV4 - SN3989   2023-01-26	Phantom	Twin-SAM V8.0 (30deg probe tilt)
DAE   Calibration Date	DAE4 Sn1257   2022-09-20	TSL Type	HBBL-600-10000
Software Version	16.2.4.2524		

Scans Setup

	Area Scan	Zoom Scan
Grid Extents [mm]	40.0 x 90.0	30.0 x 30.0 x 30.0
Grid Steps [mm]	10.0 x 15.0	6.0 x 6.0 x 1.5
Sensor Surface [mm]	3.0	1.4
Graded Grid	N/A	Yes
M2/M1 [%]		86.6
Dist 3dB Peak [mm]		11.4

Measurement Results

	Area Scan	Zoom Scan
psSAR1g [W/Kg]	3.20	3.10
psSAR10g [W/Kg]	1.77	1.74
Power Drift [dB]	N/A	-0.14



# System Performance Check Report for D1750V2 - SN1050

## Exposure Conditions

Frequency [MHz]   Channel Number	1750.000   0	TSL Permittivity	39.2
Group   UID	CW   0--	TSL Conductivity [S/m]	1.32
Conversion Factor	8.66	Phantom Section   TSL	Flat   HSL

## Hardware Setup

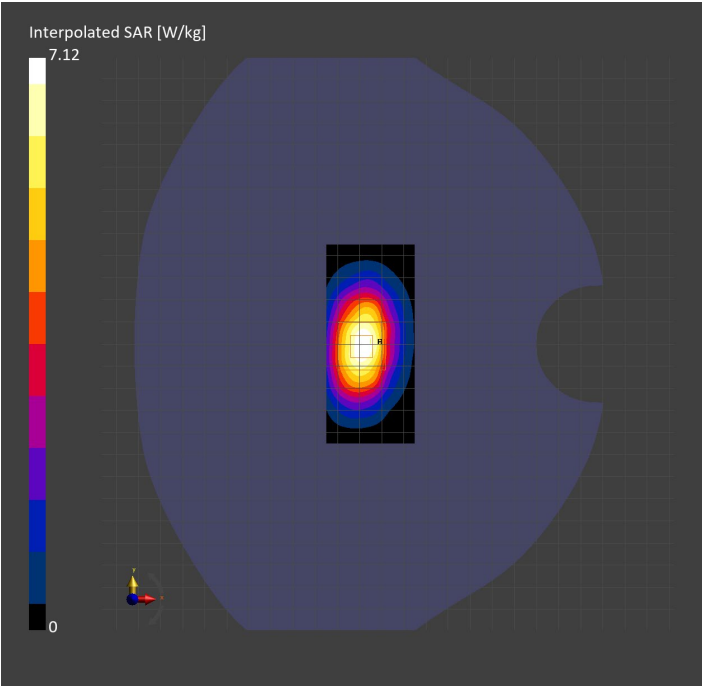
Probe   Calibration Date	EX3DV4 - SN7569   2023-04-18	Phantom	Twin-SAM V8.0 (30deg probe tilt)
DAE   Calibration Date	DAE4 Sn1547   2023-04-18	TSL Type	HBBL-600-10000
Software Version	16.2.4.2524		

## Scans Setup

	Area Scan	Zoom Scan
Grid Extents [mm]	40.0 x 90.0	30.0 x 30.0 x 30.0
Grid Steps [mm]	10.0 x 15.0	6.0 x 6.0 x 1.5
Sensor Surface [mm]	3.0	1.4
Graded Grid	N/A	Yes
M2/M1 [%]		81.2
Dist 3dB Peak [mm]		10.8

## Measurement Results

	Area Scan	Zoom Scan
psSAR1g [W/Kg]	3.49	3.73
psSAR10g [W/Kg]	1.91	1.99
Power Drift [dB]	N/A	-0.00



System Performance Check Report for D1900V2 - SN5d163

Exposure Conditions

Frequency [MHz]   Channel Number	1900.000   0	TSL Permittivity	39.0
Group   UID	CW   0--	TSL Conductivity [S/m]	1.38
Conversion Factor	8.43	Phantom Section   TSL	Flat   HSL

Hardware Setup

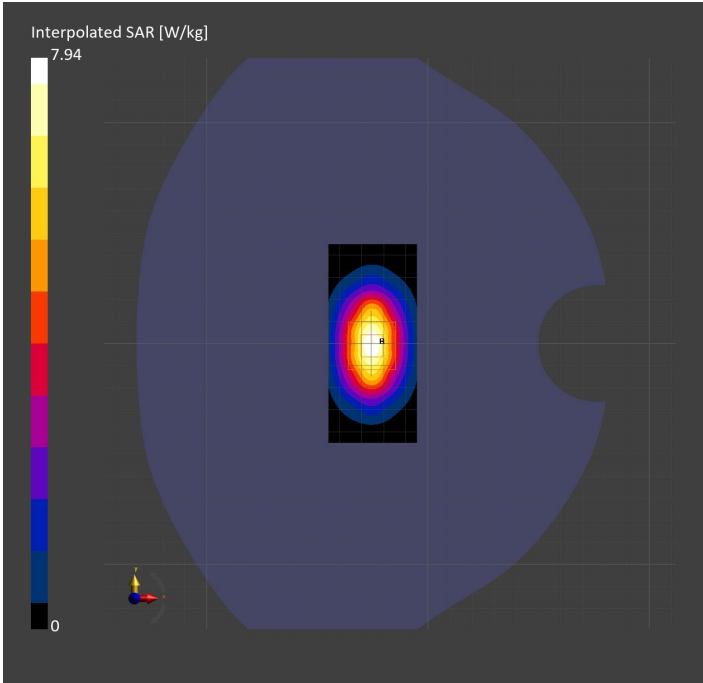
Probe   Calibration Date	EX3DV4 - SN3991   2022-09-22	Phantom	Twin-SAM V8.0 (30deg probe tilt)
DAE   Calibration Date	DAE4 Sn1674   2022-05-17	TSL Type	HBBL-600-10000
Software Version	16.2.4.2524		

Scans Setup

	Area Scan	Zoom Scan
Grid Extents [mm]	40.0 x 90.0	30.0 x 30.0 x 30.0
Grid Steps [mm]	10.0 x 15.0	6.0 x 6.0 x 1.5
Sensor Surface [mm]	3.0	1.4
Graded Grid	N/A	Yes
M2/M1 [%]		81.5
Dist 3dB Peak [mm]		10.8

Measurement Results

	Area Scan	Zoom Scan
psSAR1g [W/Kg]	4.21	4.19
psSAR10g [W/Kg]	2.19	2.19
Power Drift [dB]	N/A	-0.01



System Performance Check Report for D835V2 - SN4d002

Exposure Conditions

Frequency [MHz]   Channel Number	835.000   0	TSL Permittivity	40.8
Group   UID	CW   0--	TSL Conductivity [S/m]	0.934
Conversion Factor	8.76	Phantom Section   TSL	Flat   HSL

Hardware Setup

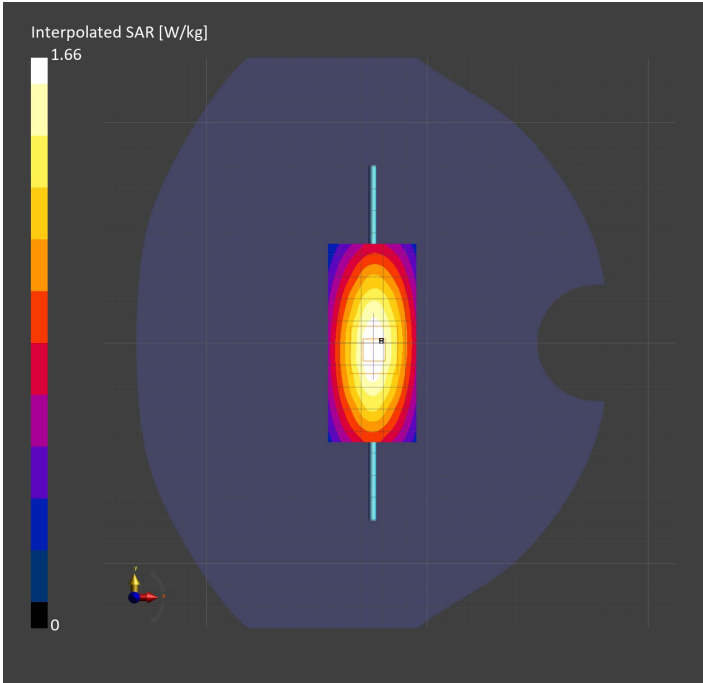
Probe   Calibration Date	EX3DV4 - SN7806   2023-04-04	Phantom	Twin-SAM V8.0 (30deg probe tilt)
DAE   Calibration Date	DAE4 Sn1784   2023-04-03	TSL Type	HBBL-600-10000
Software Version	16.2.4.2524		

Scans Setup

	Area Scan	Zoom Scan
Grid Extents [mm]	40.0 x 90.0	30.0 x 30.0 x 30.0
Grid Steps [mm]	10.0 x 15.0	6.0 x 6.0 x 1.5
Sensor Surface [mm]	3.0	1.4
Graded Grid	N/A	Yes
M2/M1 [%]		86.4
Dist 3dB Peak [mm]		16.1

Measurement Results

	Area Scan	Zoom Scan
psSAR1g [W/Kg]	1.06	1.07
psSAR10g [W/Kg]	0.697	0.701
Power Drift [dB]	N/A	-0.01



System Performance Check Report for D2600V2 - SN1036

Exposure Conditions

Frequency [MHz]   Channel Number	2600.000   0	TSL Permittivity	38.0
Group   UID	CW   0--	TSL Conductivity [S/m]	1.94
Conversion Factor	7.06	Phantom Section   TSL	Flat   HSL

Hardware Setup

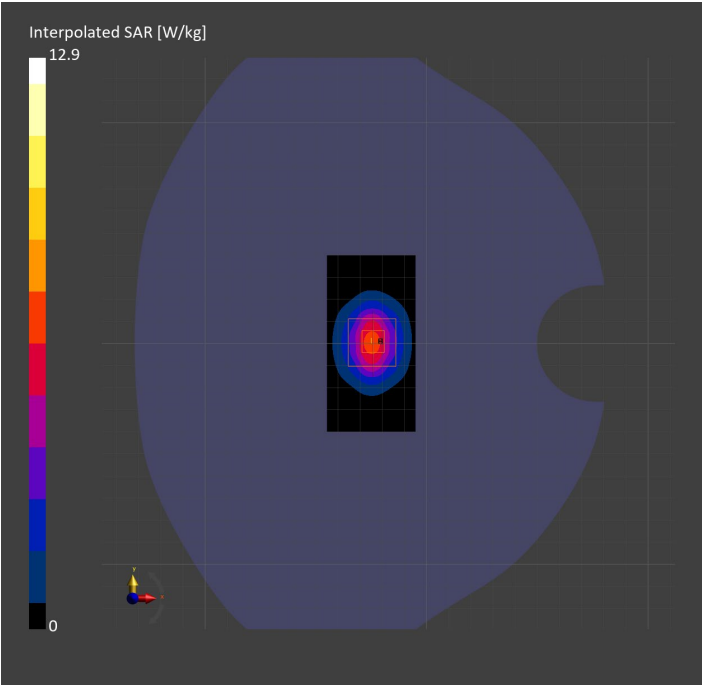
Probe   Calibration Date	EX3DV4 - SN7806   2023-04-04	Phantom	Twin-SAM V8.0 (30deg probe tilt)
DAE   Calibration Date	DAE4 Sn1784   2023-04-03	TSL Type	HBBL-600-10000
Software Version	16.2.4.2524		

Scans Setup

	Area Scan	Zoom Scan
Grid Extents [mm]	40.0 x 80.0	30.0 x 30.0 x 30.0
Grid Steps [mm]	10.0 x 10.0	5.0 x 5.0 x 1.5
Sensor Surface [mm]	3.0	1.4
Graded Grid	N/A	Yes
M2/M1 [%]		76.0
Dist 3dB Peak [mm]		9.0

Measurement Results

	Area Scan	Zoom Scan
psSAR1g [W/Kg]	5.62	5.76
psSAR10g [W/Kg]	2.52	2.61
Power Drift [dB]	N/A	-0.10



System Performance Check Report for D1900V2 - SN5d163

Exposure Conditions

Frequency [MHz]   Channel Number	1900.000   0	TSL Permittivity	38.5
Group   UID	CW   0--	TSL Conductivity [S/m]	1.45
Conversion Factor	7.53	Phantom Section   TSL	Flat   HSL

Hardware Setup

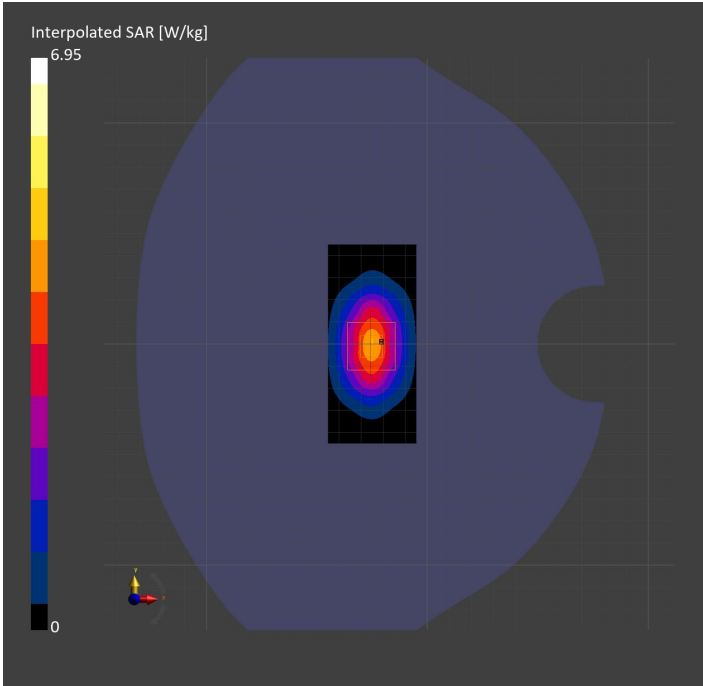
Probe   Calibration Date	EX3DV4 - SN7807   2023-04-11	Phantom	Twin-SAM V8.0 (30deg probe tilt)
DAE   Calibration Date	DAE4 Sn1799   2023-04-04	TSL Type	HBBL-600-10000
Software Version	16.2.4.2524		

Scans Setup

	Area Scan	Zoom Scan
Grid Extents [mm]	40.0 x 90.0	30.0 x 30.0 x 30.0
Grid Steps [mm]	10.0 x 15.0	6.0 x 6.0 x 1.5
Sensor Surface [mm]	3.0	1.4
Graded Grid	N/A	Yes
M2/M1 [%]		81.9
Dist 3dB Peak [mm]		9.9

Measurement Results

	Area Scan	Zoom Scan
psSAR1g [W/Kg]	3.64	3.69
psSAR10g [W/Kg]	1.89	1.91
Power Drift [dB]	N/A	-0.01



System Performance Check Report for D1900V2 - SN5d140

Exposure Conditions

Frequency [MHz]   Channel Number	1900.000   0	TSL Permittivity	39.3
Group   UID	CW   0--	TSL Conductivity [S/m]	1.45
Conversion Factor	7.53	Phantom Section   TSL	Flat   HSL

Hardware Setup

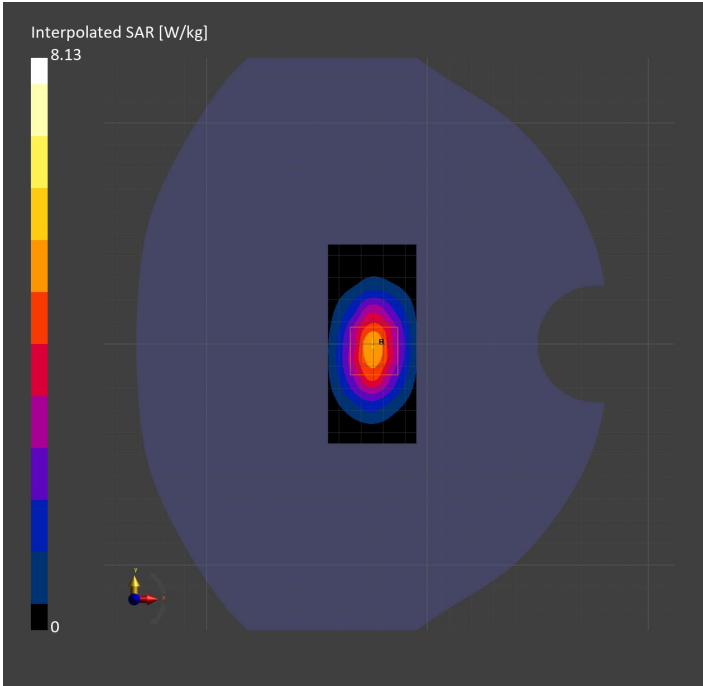
Probe   Calibration Date	EX3DV4 - SN7807   2023-04-11	Phantom	Twin-SAM V8.0 (30deg probe tilt)
DAE   Calibration Date	DAE4 Sn1799   2023-04-04	TSL Type	HBBL-600-10000
Software Version	16.2.4.2524		

Scans Setup

	Area Scan	Zoom Scan
Grid Extents [mm]	40.0 x 90.0	30.0 x 30.0 x 30.0
Grid Steps [mm]	10.0 x 15.0	6.0 x 6.0 x 1.5
Sensor Surface [mm]	3.0	1.4
Graded Grid	N/A	Yes
M2/M1 [%]		81.8
Dist 3dB Peak [mm]		10.8

Measurement Results

	Area Scan	Zoom Scan
psSAR1g [W/Kg]	4.34	4.33
psSAR10g [W/Kg]	2.26	2.26
Power Drift [dB]	N/A	0.00



System Performance Check Report for D750V3 - SN1019

Exposure Conditions

Frequency [MHz]   Channel Number	750.000   0	TSL Permittivity	41.6
Group   UID	CW   0--	TSL Conductivity [S/m]	0.925
Conversion Factor	10.62	Phantom Section   TSL	Flat   HSL

Hardware Setup

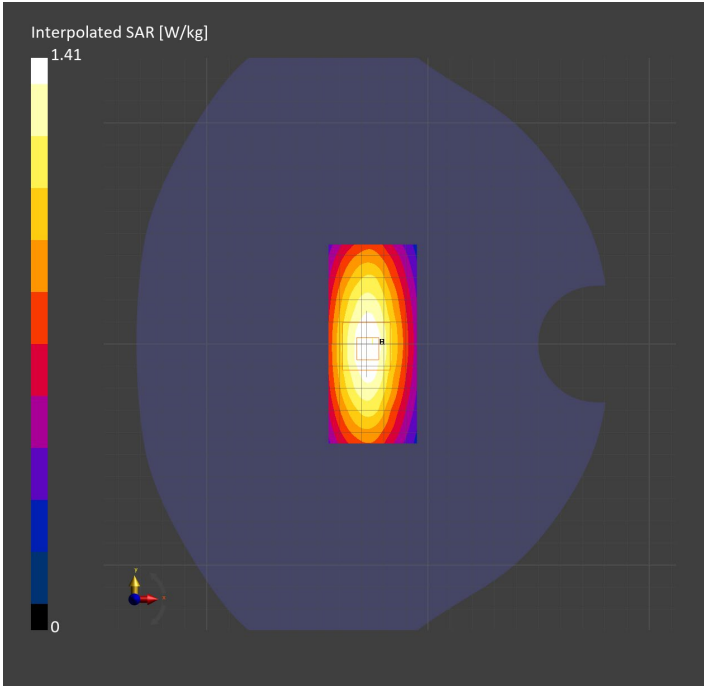
Probe   Calibration Date	EX3DV4 - SN7589   2023-04-18	Phantom	Twin-SAM V5.0 (30deg probe tilt)
DAE   Calibration Date	DAE4 Sn1544   2023-01-24	TSL Type	HBBL-600-10000
Software Version	16.2.4.2524		

Scans Setup

	Area Scan	Zoom Scan
Grid Extents [mm]	40.0 x 90.0	30.0 x 30.0 x 30.0
Grid Steps [mm]	10.0 x 15.0	6.0 x 6.0 x 1.5
Sensor Surface [mm]	3.0	1.4
Graded Grid	N/A	Yes
M2/M1 [%]		85.9
Dist 3dB Peak [mm]		> 15.0

Measurement Results

	Area Scan	Zoom Scan
psSAR1g [W/Kg]	0.895	0.908
psSAR10g [W/Kg]	0.600	0.607
Power Drift [dB]	N/A	-0.01



System Performance Check Report for D750V3 - SN1071

Exposure Conditions

Frequency [MHz]   Channel Number	750.000   0	TSL Permittivity	41.5
Group   UID	CW   0--	TSL Conductivity [S/m]	0.888
Conversion Factor	8.93	Phantom Section   TSL	Flat   HSL

Hardware Setup

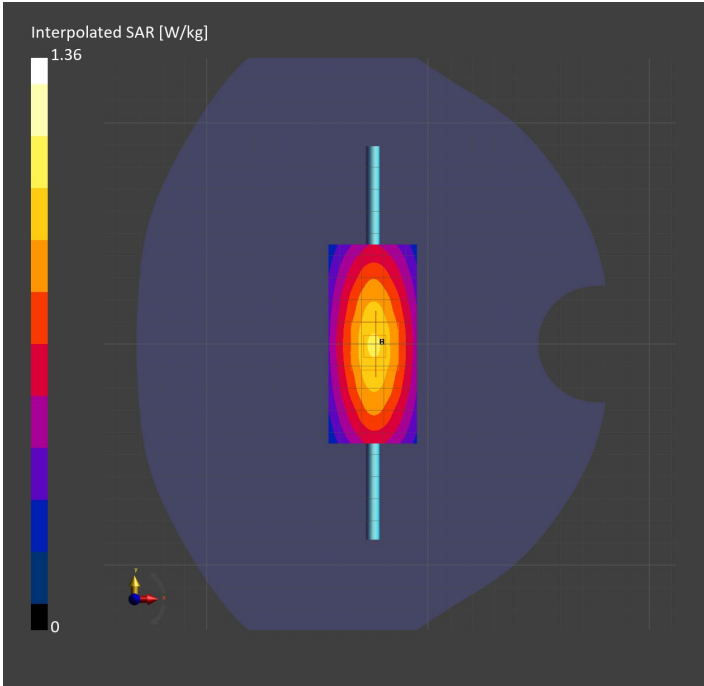
Probe   Calibration Date	EX3DV4 - SN7448   2023-02-14	Phantom	Twin-SAM V5.0 (30deg probe tilt)
DAE   Calibration Date	DAE4 Sn1472   2023-01-23	TSL Type	HBBL-600-10000
Software Version	16.2.4.2524		

Scans Setup

	Area Scan	Zoom Scan
Grid Extents [mm]	40.0 x 90.0	30.0 x 30.0 x 30.0
Grid Steps [mm]	10.0 x 15.0	6.0 x 6.0 x 1.5
Sensor Surface [mm]	3.0	1.4
Graded Grid	N/A	Yes
M2/M1 [%]		88.2
Dist 3dB Peak [mm]		> 15.0

Measurement Results

	Area Scan	Zoom Scan
psSAR1g [W/Kg]	0.903	<b>0.906</b>
psSAR10g [W/Kg]	0.603	<b>0.602</b>
Power Drift [dB]	N/A	0.02



System Performance Check Report for D750V3 - SN1019

Exposure Conditions

Frequency [MHz]   Channel Number	750.000   0	TSL Permittivity	40.1
Group   UID	CW   0--	TSL Conductivity [S/m]	0.886
Conversion Factor	8.93	Phantom Section   TSL	Flat   HSL

Hardware Setup

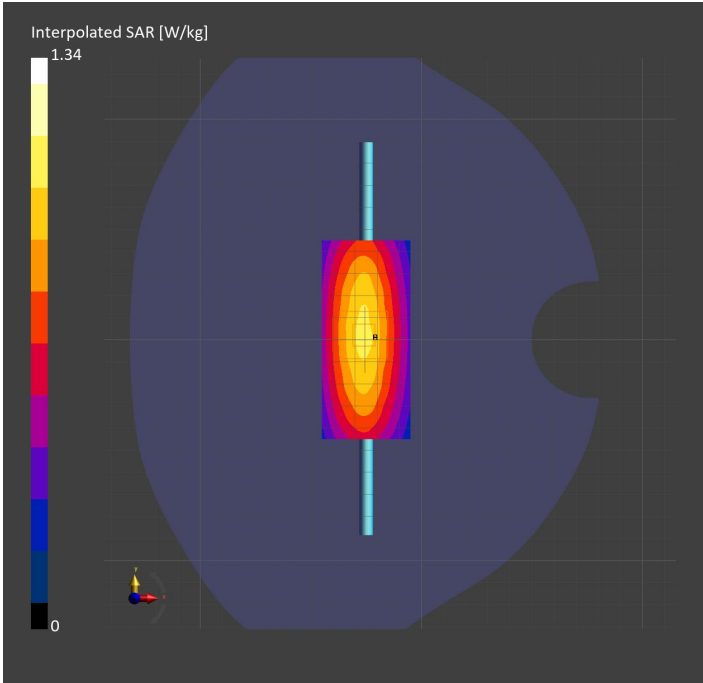
Probe   Calibration Date	EX3DV4 - SN7448   2023-02-14	Phantom	Twin-SAM V5.0 (30deg probe tilt)
DAE   Calibration Date	DAE4 Sn1472   2023-01-23	TSL Type	HBBL-600-10000
Software Version	16.2.4.2524		

Scans Setup

	Area Scan	Zoom Scan
Grid Extents [mm]	40.0 x 90.0	30.0 x 30.0 x 30.0
Grid Steps [mm]	10.0 x 15.0	6.0 x 6.0 x 1.5
Sensor Surface [mm]	3.0	1.4
Graded Grid	N/A	Yes
M2/M1 [%]		89.0
Dist 3dB Peak [mm]		> 15.0

Measurement Results

	Area Scan	Zoom Scan
psSAR1g [W/Kg]	0.908	<b>0.899</b>
psSAR10g [W/Kg]	0.606	<b>0.594</b>
Power Drift [dB]	N/A	0.00



System Performance Check Report for D2600V2 - SN1036

Exposure Conditions

Frequency [MHz]   Channel Number	2600.000   0	TSL Permittivity	38.4
Group   UID	CW   0--	TSL Conductivity [S/m]	1.98
Conversion Factor	7.33	Phantom Section   TSL	Flat   HSL

Hardware Setup

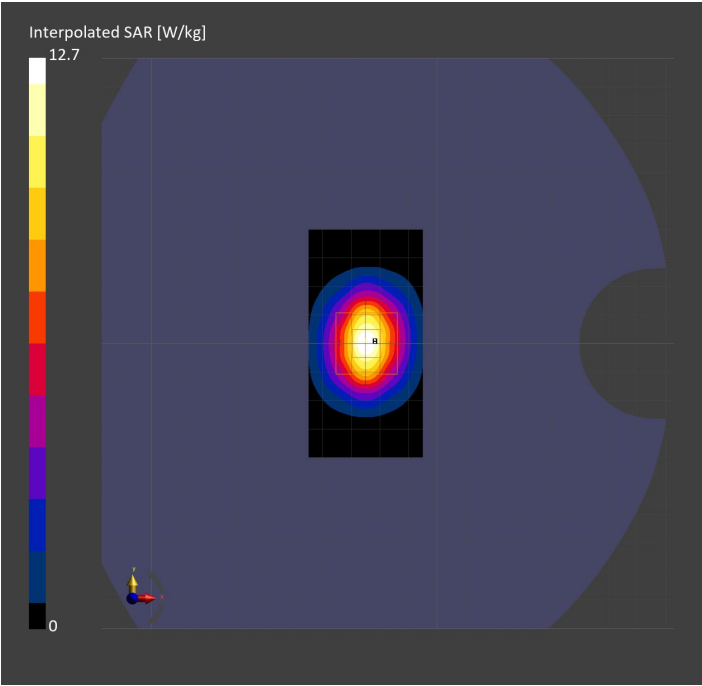
Probe   Calibration Date	EX3DV4 - SN7808   2023-04-18	Phantom	Twin-SAM V8.0 (30deg probe tilt)
DAE   Calibration Date	DAE4 Sn1796   2023-04-03	TSL Type	HBBL-600-10000
Software Version	16.2.4.2524		

Scans Setup

	Area Scan	Zoom Scan
Grid Extents [mm]	40.0 x 80.0	30.0 x 30.0 x 30.0
Grid Steps [mm]	10.0 x 10.0	5.0 x 5.0 x 1.5
Sensor Surface [mm]	3.0	1.4
Graded Grid	N/A	Yes
M2/M1 [%]		78.9
Dist 3dB Peak [mm]		9.0

Measurement Results

	Area Scan	Zoom Scan
psSAR1g [W/Kg]	6.00	5.98
psSAR10g [W/Kg]	2.71	2.73
Power Drift [dB]	N/A	-0.00



System Performance Check Report for D3500V2 - SN1011

Exposure Conditions

Frequency [MHz]   Channel Number	3500.000   0	TSL Permittivity	38.7
Group   UID	CW   0--	TSL Conductivity [S/m]	2.77
Conversion Factor	6.79	Phantom Section   TSL	Flat   HSL

Hardware Setup

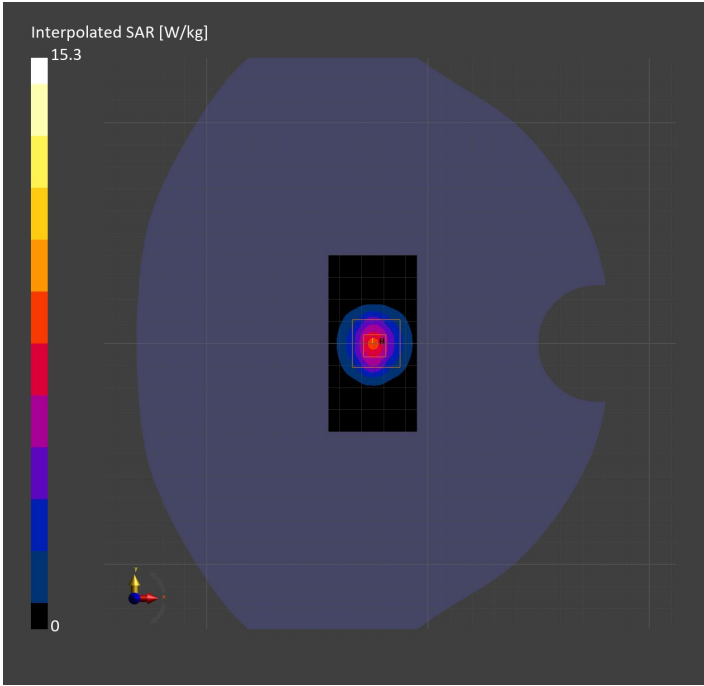
Probe   Calibration Date	EX3DV4 - SN3990   2023-02-17	Phantom	Twin-SAM V5.0 (30deg probe tilt)
DAE   Calibration Date	DAE4 Sn1545   2023-02-14	TSL Type	HBBL-600-10000
Software Version	16.2.4.2524		

Scans Setup

	Area Scan	Zoom Scan
Grid Extents [mm]	40.0 x 80.0	28.0 x 28.0 x 28.0
Grid Steps [mm]	10.0 x 10.0	5.0 x 5.0 x 1.4
Sensor Surface [mm]	3.0	1.4
Graded Grid	N/A	Yes
M2/M1 [%]		76.5
Dist 3dB Peak [mm]		8.0

Measurement Results

	Area Scan	Zoom Scan
psSAR1g [W/Kg]	5.66	5.93
psSAR10g [W/Kg]	2.15	2.26
Power Drift [dB]	N/A	0.06



System Performance Check Report for D3700V2 - SN1110

Exposure Conditions

Frequency [MHz]   Channel Number	3700.000   0	TSL Permittivity	38.6
Group   UID	CW   0--	TSL Conductivity [S/m]	3.08
Conversion Factor	6.66	Phantom Section   TSL	Flat   HSL

Hardware Setup

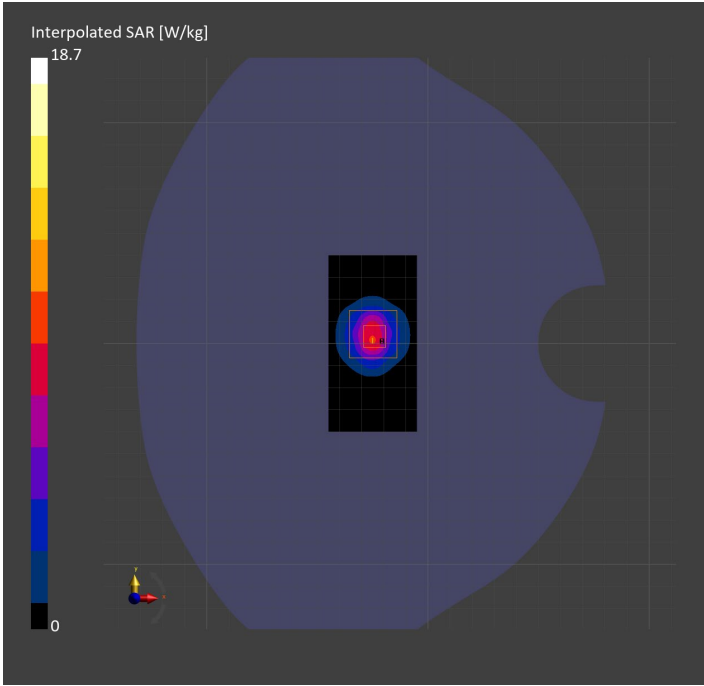
Probe   Calibration Date	EX3DV4 - SN3990   2023-02-17	Phantom	Twin-SAM V5.0 (30deg probe tilt)
DAE   Calibration Date	DAE4 Sn1545   2023-02-14	TSL Type	HBBL-600-10000
Software Version	16.2.4.2524		

Scans Setup

	Area Scan	Zoom Scan
Grid Extents [mm]	40.0 x 80.0	28.0 x 28.0 x 28.0
Grid Steps [mm]	10.0 x 10.0	5.0 x 5.0 x 1.4
Sensor Surface [mm]	3.0	1.4
Graded Grid	N/A	Yes
M2/M1 [%]		75.0
Dist 3dB Peak [mm]		8.0

Measurement Results

	Area Scan	Zoom Scan
psSAR1g [W/Kg]	6.81	6.98
psSAR10g [W/Kg]	2.52	2.58
Power Drift [dB]	N/A	-0.01



System Performance Check Report for D2600V2 - SN1036

Exposure Conditions

Frequency [MHz]   Channel Number	2600.000   0	TSL Permittivity	37.9
Group   UID	CW   0--	TSL Conductivity [S/m]	2.01
Conversion Factor	7.32	Phantom Section   TSL	Flat   HSL

Hardware Setup

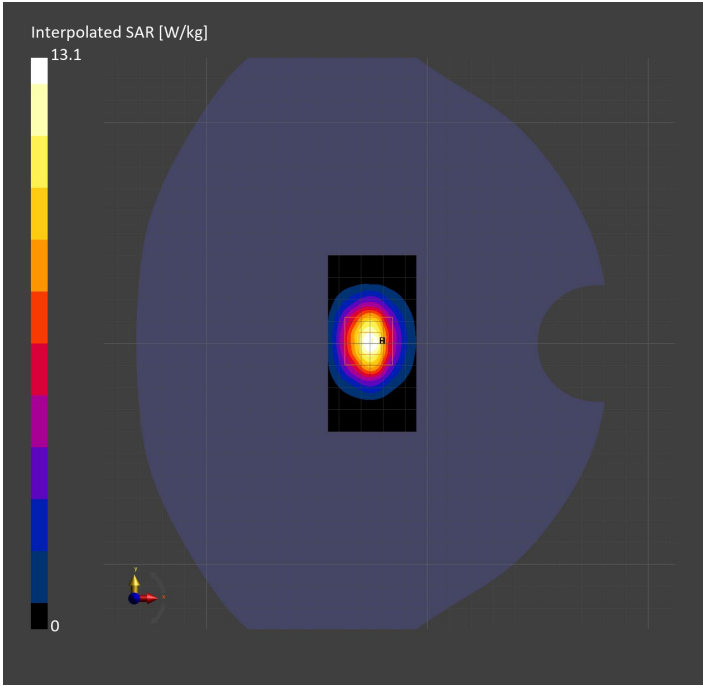
Probe   Calibration Date	EX3DV4 - SN3885   2022-09-20	Phantom	Twin-SAM V5.0 (30deg probe tilt)
DAE   Calibration Date	DAE4 Sn1548   2023-02-14	TSL Type	HBBL-600-10000
Software Version	16.2.4.2524		

Scans Setup

	Area Scan	Zoom Scan
Grid Extents [mm]	40.0 x 80.0	30.0 x 30.0 x 30.0
Grid Steps [mm]	10.0 x 10.0	5.0 x 5.0 x 1.5
Sensor Surface [mm]	3.0	1.4
Graded Grid	N/A	Yes
M2/M1 [%]		78.8
Dist 3dB Peak [mm]		9.0

Measurement Results

	Area Scan	Zoom Scan
psSAR1g [W/Kg]	6.09	6.06
psSAR10g [W/Kg]	2.73	2.72
Power Drift [dB]	N/A	0.01



System Performance Check Report for D2300V2 - SN1058

Exposure Conditions

Frequency [MHz]   Channel Number	2300.000   0	TSL Permittivity	37.8
Group   UID	CW   0--	TSL Conductivity [S/m]	1.69
Conversion Factor	7.71	Phantom Section   TSL	Flat   HSL

Hardware Setup

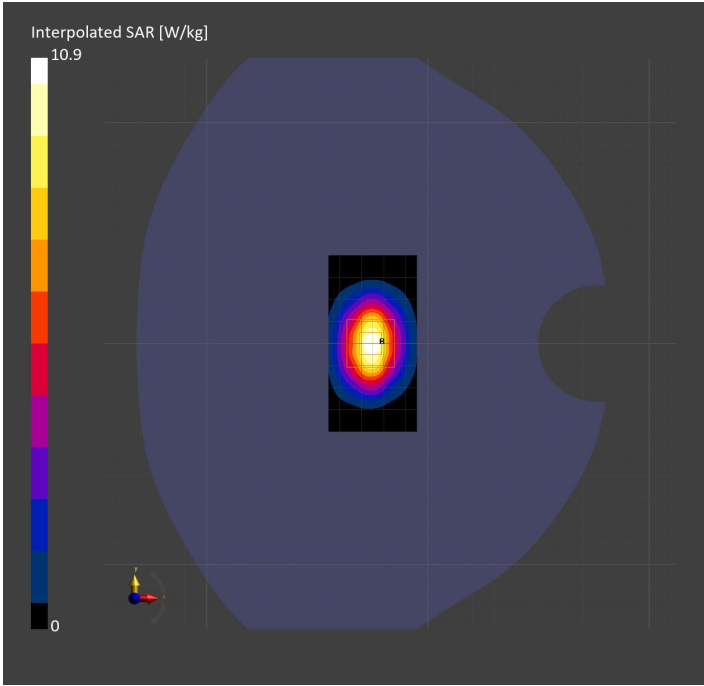
Probe   Calibration Date	EX3DV4 - SN7482   2023-04-18	Phantom	Twin-SAM V8.0 (30deg probe tilt)
DAE   Calibration Date	DAE4 Sn1380   2023-02-14	TSL Type	HBBL-600-10000
Software Version	16.2.4.2524		

Scans Setup

	Area Scan	Zoom Scan
Grid Extents [mm]	40.0 x 80.0	30.0 x 30.0 x 30.0
Grid Steps [mm]	10.0 x 10.0	5.0 x 5.0 x 1.5
Sensor Surface [mm]	3.0	1.4
Graded Grid	N/A	Yes
M2/M1 [%]		79.4
Dist 3dB Peak [mm]		9.0

Measurement Results

	Area Scan	Zoom Scan
psSAR1g [W/Kg]	5.35	5.33
psSAR10g [W/Kg]	2.55	2.57
Power Drift [dB]	N/A	0.01



System Performance Check Report for D3500V2 - SN1060

Exposure Conditions

Frequency [MHz]   Channel Number	3500.000   0	TSL Permittivity	39.6
Group   UID	CW   0--	TSL Conductivity [S/m]	2.77
Conversion Factor	6.87	Phantom Section   TSL	Flat   HSL

Hardware Setup

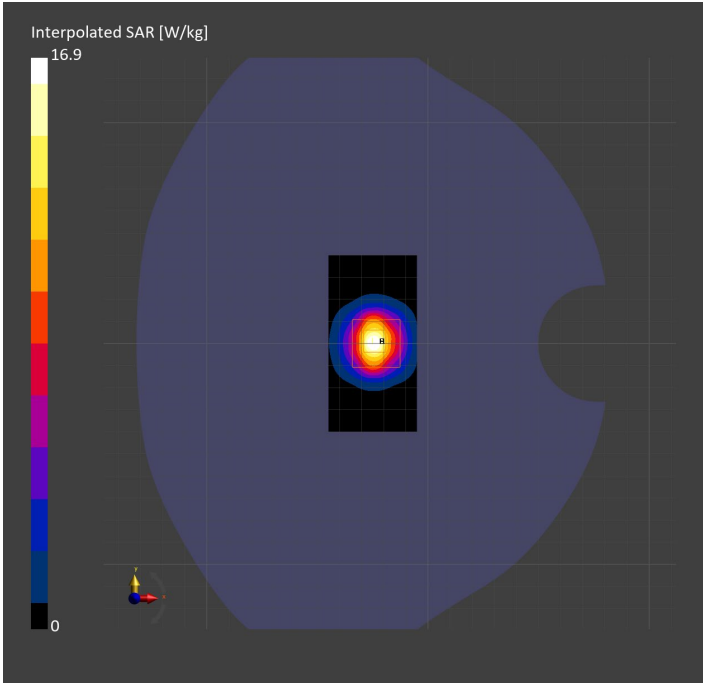
Probe   Calibration Date	EX3DV4 - SN7335   2023-01-26	Phantom	Twin-SAM V8.0 (30deg probe tilt)
DAE   Calibration Date	DAE4ip Sn1619   2023-04-18	TSL Type	HBBL-600-10000
Software Version	16.2.4.2524		

Scans Setup

	Area Scan	Zoom Scan
Grid Extents [mm]	40.0 x 80.0	28.0 x 28.0 x 28.0
Grid Steps [mm]	10.0 x 10.0	5.0 x 5.0 x 1.4
Sensor Surface [mm]	3.0	1.4
Graded Grid	N/A	Yes
M2/M1 [%]		78.2
Dist 3dB Peak [mm]		9.0

Measurement Results

	Area Scan	Zoom Scan
psSAR1g [W/Kg]	6.92	6.96
psSAR10g [W/Kg]	2.67	2.72
Power Drift [dB]	N/A	0.03



System Performance Check Report for D3900V2 - SN1093

Exposure Conditions

Frequency [MHz]   Channel Number	3900.000   0	TSL Permittivity	36.6
Group   UID	CW   0--	TSL Conductivity [S/m]	3.43
Conversion Factor	6.75	Phantom Section   TSL	Flat   HSL

Hardware Setup

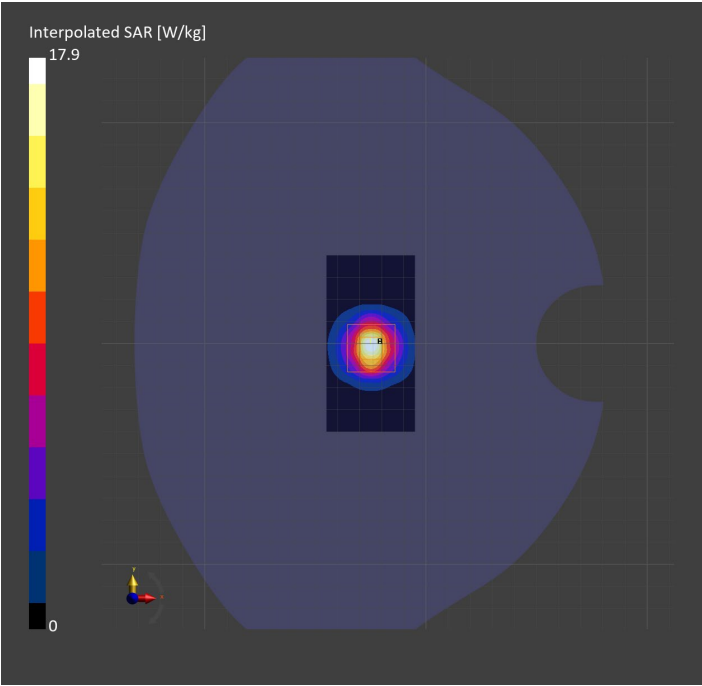
Probe   Calibration Date	EX3DV4 - SN7335   2023-01-26	Phantom	Twin-SAM V8.0 (30deg probe tilt)
DAE   Calibration Date	DAE4ip Sn1619   2023-04-18	TSL Type	HBBL-600-10000
Software Version	16.2.4.2448		

Scans Setup

	Area Scan	Zoom Scan
Grid Extents [mm]	40.0 x 80.0	28.0 x 28.0 x 28.0
Grid Steps [mm]	10.0 x 10.0	5.0 x 5.0 x 1.4
Sensor Surface [mm]	3.0	1.4
Graded Grid	N/A	Yes
M2/M1 [%]		74.8
Dist 3dB Peak [mm]		8.0

Measurement Results

	Area Scan	Zoom Scan
psSAR1g [W/Kg]	6.40	6.60
psSAR10g [W/Kg]	2.27	2.38
Power Drift [dB]	N/A	0.02



System Performance Check Report for D3700V2 - SN1110

Exposure Conditions

Frequency [MHz]   Channel Number	3700.000   0	TSL Permittivity	36.6
Group   UID	CW   0--	TSL Conductivity [S/m]	2.96
Conversion Factor	6.92	Phantom Section   TSL	Flat   HSL

Hardware Setup

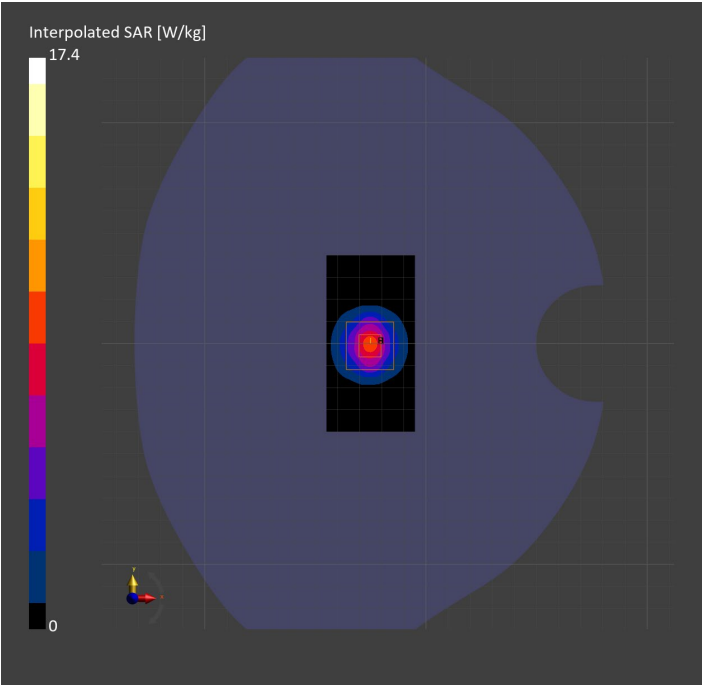
Probe   Calibration Date	EX3DV4 - SN7335   2023-01-26	Phantom	Twin-SAM V8.0 (30deg probe tilt)
DAE   Calibration Date	DAE4ip Sn1619   2023-04-18	TSL Type	HBBL-600-10000
Software Version	16.2.4.2448		

Scans Setup

	Area Scan	Zoom Scan
Grid Extents [mm]	40.0 x 80.0	28.0 x 28.0 x 28.0
Grid Steps [mm]	10.0 x 10.0	5.0 x 5.0 x 1.4
Sensor Surface [mm]	3.0	1.4
Graded Grid	N/A	Yes
M2/M1 [%]		75.9
Dist 3dB Peak [mm]		8.1

Measurement Results

	Area Scan	Zoom Scan
psSAR1g [W/Kg]	6.73	6.79
psSAR10g [W/Kg]	2.50	2.58
Power Drift [dB]	N/A	0.00



System Performance Check Report for D3900V2 - SN1093

Exposure Conditions

Frequency [MHz]   Channel Number	3900.000   0	TSL Permittivity	38.7
Group   UID	CW   0--	TSL Conductivity [S/m]	3.17
Conversion Factor	6.15	Phantom Section   TSL	Flat   HSL

Hardware Setup

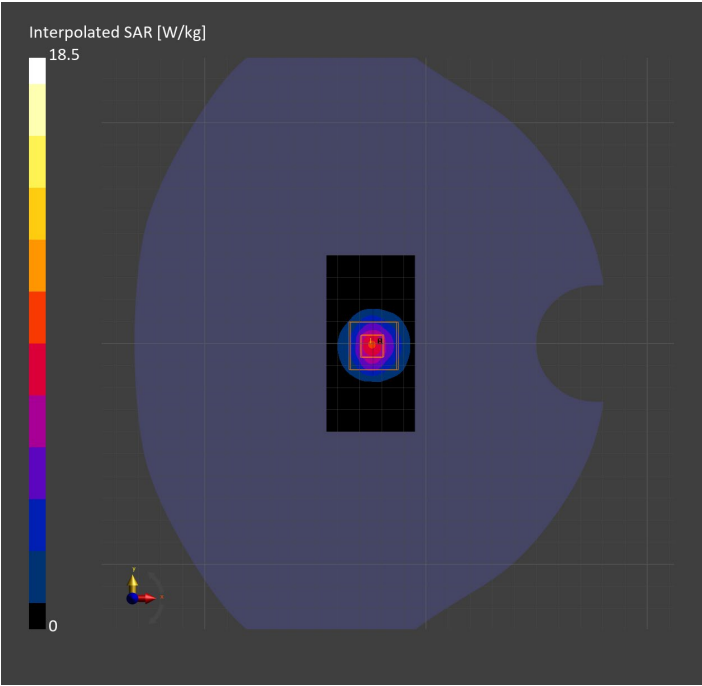
Probe   Calibration Date	EX3DV4 - SN7463   2023-04-19	Phantom	Twin-SAM V8.0 (30deg probe tilt)
DAE   Calibration Date	DAE4 Sn1673   2023-05-12	TSL Type	HBBL-600-10000
Software Version	16.2.4.2448		

Scans Setup

	Area Scan	Zoom Scan
Grid Extents [mm]	40.0 x 80.0	28.0 x 28.0 x 28.0
Grid Steps [mm]	10.0 x 10.0	5.0 x 5.0 x 1.4
Sensor Surface [mm]	3.0	1.4
Graded Grid	N/A	Yes
M2/M1 [%]		74.3
Dist 3dB Peak [mm]		8.0

Measurement Results

	Area Scan	Zoom Scan
psSAR1g [W/Kg]	6.44	6.73
psSAR10g [W/Kg]	2.29	2.40
Power Drift [dB]	-0.00	0.01



System Performance Check Report for D2300V2 - SN1002

Exposure Conditions

Frequency [MHz]   Channel Number	2300.000   0	TSL Permittivity	41.3
Group   UID	CW   0--	TSL Conductivity [S/m]	1.74
Conversion Factor	8.2	Phantom Section   TSL	Flat   HSL

Hardware Setup

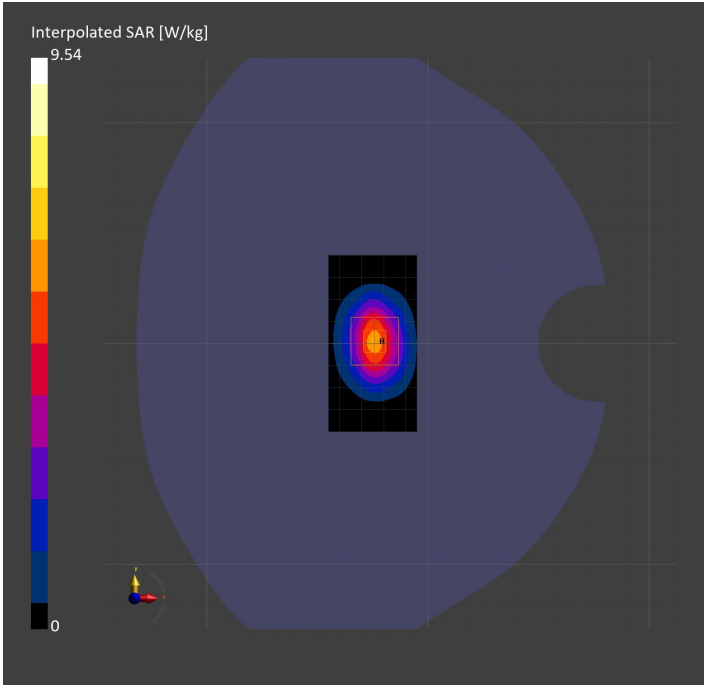
Probe   Calibration Date	EX3DV4 - SN7356   2023-03-17	Phantom	Twin-SAM V8.0 (30deg probe tilt)
DAE   Calibration Date	DAE4 Sn1798   2023-05-02	TSL Type	HBBL-600-10000
Software Version	16.2.4.2448		

Scans Setup

	Area Scan	Zoom Scan
Grid Extents [mm]	40.0 x 80.0	30.0 x 30.0 x 30.0
Grid Steps [mm]	10.0 x 10.0	5.0 x 5.0 x 1.5
Sensor Surface [mm]	3.0	1.4
Graded Grid	N/A	Yes
M2/M1 [%]		80.5
Dist 3dB Peak [mm]		9.0

Measurement Results

	Area Scan	Zoom Scan
psSAR1g [W/Kg]	4.68	4.77
psSAR10g [W/Kg]	2.25	2.30
Power Drift [dB]	N/A	0.05



System Performance Check Report for D4900V2 - SN1065

Exposure Conditions

Frequency [MHz]   Channel Number	4900.000   0	TSL Permittivity	34.9
Group   UID	CW   0--	TSL Conductivity [S/m]	4.48
Conversion Factor	6.28	Phantom Section   TSL	Flat   HSL

Hardware Setup

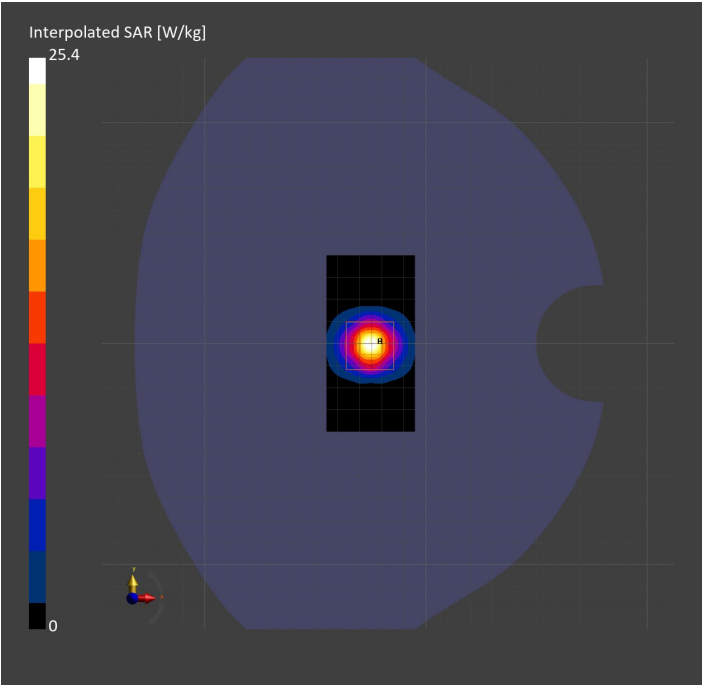
Probe   Calibration Date	EX3DV4 - SN7356   2023-03-17	Phantom	Twin-SAM V8.0 (30deg probe tilt)
DAE   Calibration Date	DAE4 Sn1798   2023-05-02	TSL Type	HBBL-600-10000
Software Version	16.2.4.2448		

Scans Setup

	Area Scan	Zoom Scan
Grid Extents [mm]	40.0 x 80.0	25.0 x 25.0 x 25.0
Grid Steps [mm]	10.0 x 10.0	4.0 x 4.0 x 1.4
Sensor Surface [mm]	3.0	1.4
Graded Grid	N/A	Yes
M2/M1 [%]		67.2
Dist 3dB Peak [mm]		8.0

Measurement Results

	Area Scan	Zoom Scan
psSAR1g [W/Kg]	7.08	7.40
psSAR10g [W/Kg]	2.24	2.37
Power Drift [dB]	N/A	0.01



System Performance Check Report for CLA-13 - SN1008

Exposure Conditions

Frequency [MHz]   Channel Number	13.000   0	TSL Permittivity	54.7
Group   UID	CW   0--	TSL Conductivity [S/m]	0.718
Conversion Factor	19.03	Phantom Section   TSL	Flat   HSL

Hardware Setup

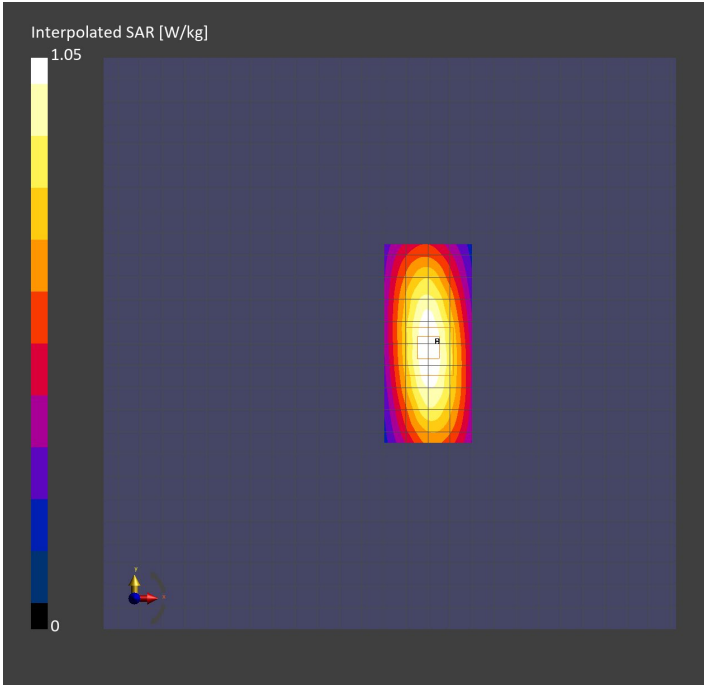
Probe   Calibration Date	EX3DV4 - SN3989   2023-01-26	Phantom	ELI V8.0 (20deg probe tilt)
DAE   Calibration Date	DAE4 Sn1257   2022-09-20	TSL Type	HBBL4-250V3
Software Version	16.2.4.2524		

Scans Setup

	Area Scan	Zoom Scan
Grid Extents [mm]	40.0 x 90.0	30.0 x 30.0 x 30.0
Grid Steps [mm]	10.0 x 15.0	6.0 x 6.0 x 1.5
Sensor Surface [mm]	3.0	1.4
Graded Grid	N/A	Yes
M2/M1 [%]		75.9
Dist 3dB Peak [mm]		15.6

Measurement Results

	Area Scan	Zoom Scan
psSAR1g [W/Kg]	0.563	0.533
psSAR10g [W/Kg]	0.452	0.330
Power Drift [dB]	N/A	0.00



System Performance Check Report for D3900V2 - SN1093

Exposure Conditions

Frequency [MHz]   Channel Number	3900.000   0	TSL Permittivity	39.1
Group   UID	CW   0--	TSL Conductivity [S/m]	3.18
Conversion Factor	7.12	Phantom Section   TSL	Flat   HSL

Hardware Setup

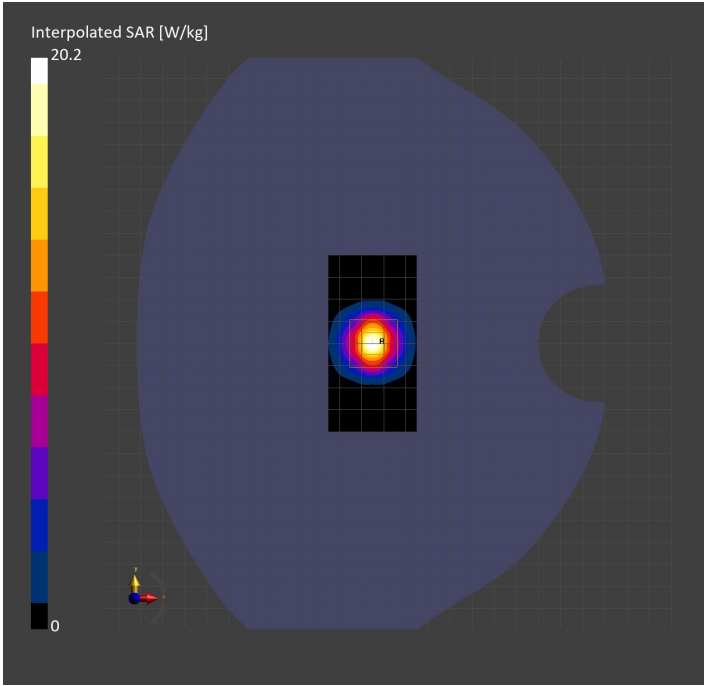
Probe   Calibration Date	EX3DV4 - SN3989   2023-01-26	Phantom	Twin-SAM V8.0 (30deg probe tilt)
DAE   Calibration Date	DAE4 Sn1547   2023-04-18	TSL Type	HBBL-600-10000
Software Version	16.2.4.2524		

Scans Setup

	Area Scan	Zoom Scan
Grid Extents [mm]	40.0 x 80.0	28.0 x 28.0 x 28.0
Grid Steps [mm]	10.0 x 10.0	5.0 x 5.0 x 1.4
Sensor Surface [mm]	3.0	1.4
Graded Grid	N/A	Yes
M2/M1 [%]		72.5
Dist 3dB Peak [mm]		8.3

Measurement Results

	Area Scan	Zoom Scan
psSAR1g [W/Kg]	7.16	7.13
psSAR10g [W/Kg]	2.53	2.58
Power Drift [dB]	N/A	-0.16



System Performance Check Report for D2600V2 - SN1036

Exposure Conditions

Frequency [MHz]   Channel Number	2600.000   0	TSL Permittivity	39.6
Group   UID	CW   0--	TSL Conductivity [S/m]	1.94
Conversion Factor	7.39	Phantom Section   TSL	Flat   HSL

Hardware Setup

Probe   Calibration Date	EX3DV4 - SN7448   2023-02-14	Phantom	Twin-SAM V5.0 (30deg probe tilt)
DAE   Calibration Date	DAE4 Sn1472   2023-01-23	TSL Type	HBBL-600-10000
Software Version	16.2.4.2524		

Scans Setup

	Area Scan	Zoom Scan
Grid Extents [mm]	40.0 x 80.0	30.0 x 30.0 x 30.0
Grid Steps [mm]	10.0 x 10.0	5.0 x 5.0 x 1.5
Sensor Surface [mm]	3.0	1.4
Graded Grid	N/A	Yes
M2/M1 [%]		79.9
Dist 3dB Peak [mm]		9.0

Measurement Results

	Area Scan	Zoom Scan
psSAR1g [W/Kg]	5.90	5.84
psSAR10g [W/Kg]	2.65	2.64
Power Drift [dB]	N/A	0.00

