

Measurement Report for Custom Band: CW, BACK

Exposure Conditions

Band	Custom Band	TSL Permittivity	40.3
Frequency [MHz] Channel Number	1617.600 262391	TSL Conductivity [S/m]	1.24
Group UID	CW 0--	Phantom Section TSL	Flat HSL
Conversion Factor	8.86	Test Distance [mm]	5.00

Hardware Setup

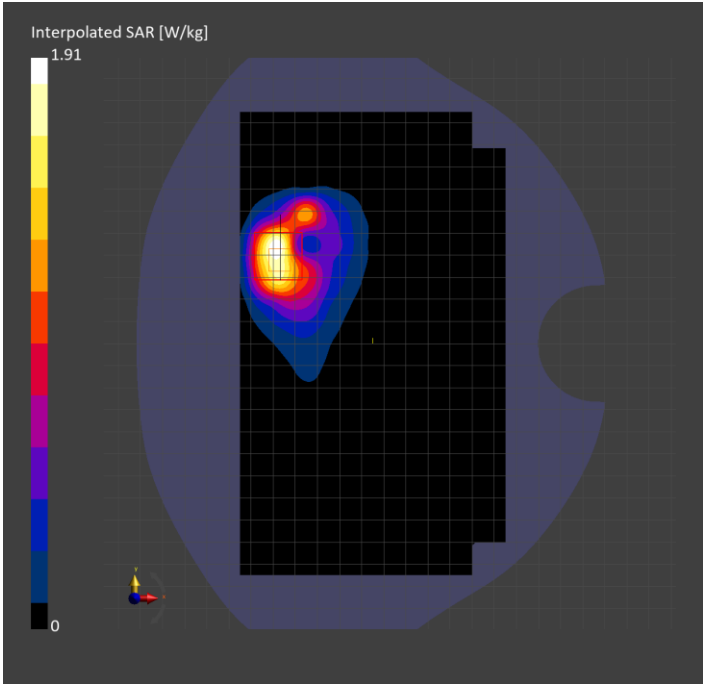
Probe Calibration Date	EX3DV4 - SN3989 2023-01-26	Phantom	Twin-SAM V8.0 (30deg probe tilt)
DAE Calibration Date	DAE4 Sn1257 2022-09-20	TSL Type	HBBL-600-10000
Software Version	16.2.4.2524		

Scan Setup

	Area Scan	Zoom Scan
Grid Extents [mm]	120.0 x 210.0	30.0 x 30.0 x 30.0
Grid Steps [mm]	15.0 x 15.0	6.0 x 6.0 x 1.5
Sensor Surface [mm]	3.0	1.4
Graded Grid	N/A	Yes
M2/M1 [%]		78.8
Dist 3dB Peak [mm]		6.0

Measurement Results

	Area Scan	Zoom Scan
psSAR1g [W/Kg]	0.771	0.906
psSAR10g [W/Kg]	0.412	0.415
Power Drift [dB]	N/A	-0.03



Measurement Report for Band 30: LTE-FDD (SC-FDMA, 50% RB, 10 MHz, QPSK)

RBPosition:Mid AntennaCfg:SISO, BACK

Exposure Conditions

Band	Band 30	TSL Permittivity	40.6
Frequency [MHz] Channel Number	2310.000 27710	TSL Conductivity [S/m]	1.72
Group UID	LTE-FDD 10154-CAH	Phantom Section TSL	Flat HSL
Conversion Factor	8.2	Test Distance [mm]	5.00

Hardware Setup

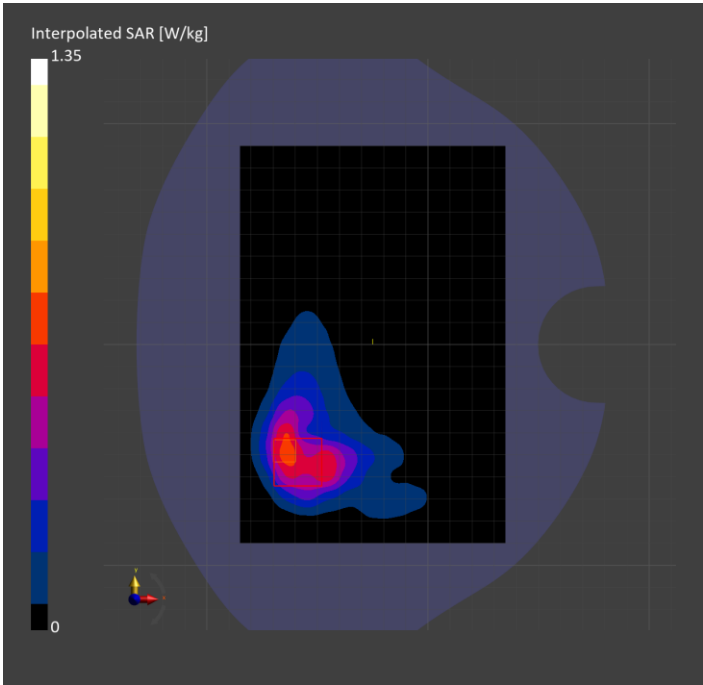
Probe Calibration Date	EX3DV4 - SN7356 2023-03-17	Phantom	Twin-SAM V8.0 (30deg probe tilt)
DAE Calibration Date	DAE4 Sn1798 2023-05-02	TSL Type	HBBL-600-10000
Software Version	16.2.4.2524		

Scan Setup

	Area Scan	Zoom Scan
Grid Extents [mm]	120.0 x 180.0	30.0 x 30.0 x 30.0
Grid Steps [mm]	10.0 x 10.0	5.0 x 5.0 x 1.5
Sensor Surface [mm]	3.0	1.4
Graded Grid	N/A	Yes
M2/M1 [%]		74.1
Dist 3dB Peak [mm]		10.1

Measurement Results

	Area Scan	Zoom Scan
psSAR1g [W/Kg]	0.574	0.551
psSAR10g [W/Kg]	0.304	0.275
Power Drift [dB]	N/A	0.04



Measurement Report for Band 48: LTE-TDD (SC-FDMA, 100% RB, 20 MHz, QPSK, UL Subframe=2,3,4,7,8,9) AntennaCfg:SISO, TILT

Exposure Conditions

Band	Band 48	TSL Permittivity	37.2
Frequency [MHz] Channel Number	3646.700 56207	TSL Conductivity [S/m]	2.94
Group UID	LTE-TDD 10512-AAG	Phantom Section TSL	LeftHead HSL
Conversion Factor	6.66	Test Distance [mm]	0.00

Hardware Setup

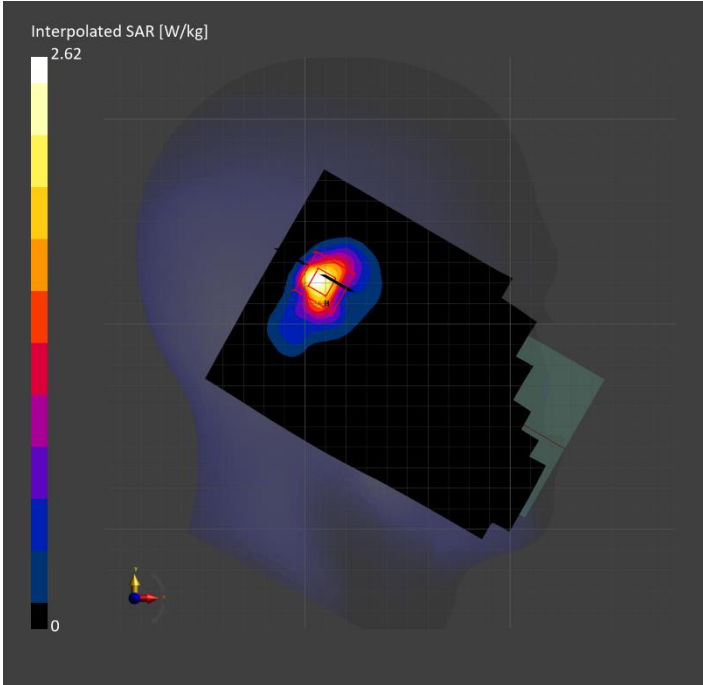
Probe Calibration Date	EX3DV4 - SN3990 2023-02-17	Phantom	Twin-SAM V5.0 (30deg probe tilt)
DAE Calibration Date	DAE4 Sn1545 2023-02-14	TSL Type	HBBL-600-10000
Software Version	16.2.4.2524		

Scan Setup

	Area Scan	Zoom Scan
Grid Extents [mm]	120.0 x 200.0	28.0 x 28.0 x 28.0
Grid Steps [mm]	10.0 x 10.0	4.2 x 4.2 x 1.4
Sensor Surface [mm]	3.0	1.4
Graded Grid	N/A	Yes
M2/M1 [%]		72.1
Dist 3dB Peak [mm]		5.0

Measurement Results

	Area Scan	Zoom Scan
psSAR1g [W/Kg]	0.561	0.758
psSAR10g [W/Kg]	0.219	0.224
Power Drift [dB]	N/A	0.03



Measurement Report for WLAN 2.4GHz: IEEE 802.11b WiFi 2.4 GHz (DSSS, 1 Mbps, 99pc duty cycle), CHEEK

Exposure Conditions

Band	WLAN 2.4GHz	TSL Permittivity	37.8
Frequency [MHz] Channel Number	2412.000 1	TSL Conductivity [S/m]	1.81
Group UID	WLAN 10415-AAA	Phantom Section TSL	LeftHead HSL
Conversion Factor	7.33	Test Distance [mm]	0.00

Hardware Setup

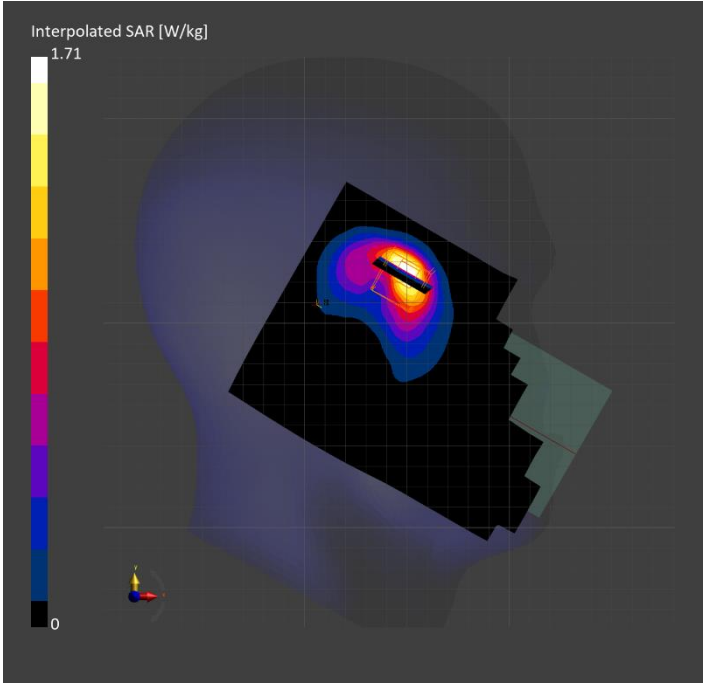
Probe Calibration Date	EX3DV4 - SN3772 2023-02-13	Phantom	Twin-SAM V8.0 (30deg probe tilt)
DAE Calibration Date	DAE4 Sn1359 2023-01-24	TSL Type	HBBL-600-10000
Software Version	16.2.4.2524		

Scan Setup

	Area Scan	Zoom Scan
Grid Extents [mm]	120.0 x 180.0	30.0 x 30.0 x 30.0
Grid Steps [mm]	10.0 x 10.0	5.0 x 5.0 x 1.5
Sensor Surface [mm]	3.0	1.4
Graded Grid	N/A	Yes
M2/M1 [%]		76.5
Dist 3dB Peak [mm]		6.5

Measurement Results

	Area Scan	Zoom Scan
psSAR1g [W/Kg]	0.652	0.722
psSAR10g [W/Kg]	0.310	0.321
Power Drift [dB]	N/A	-0.03



Measurement Report for WLAN 5GHz: IEEE 802.11ac WiFi (80MHz, MCS0, 99pc duty cycle), EDGE LEFT

Exposure Conditions

Band	WLAN 5GHz	TSL Permittivity	34.2
Frequency [MHz] Channel Number	5610.000 122	TSL Conductivity [S/m]	4.87
Group UID	WLAN 10544-AAD	Phantom Section TSL	Flat HSL
Conversion Factor	4.46	Test Distance [mm]	5.00

Hardware Setup

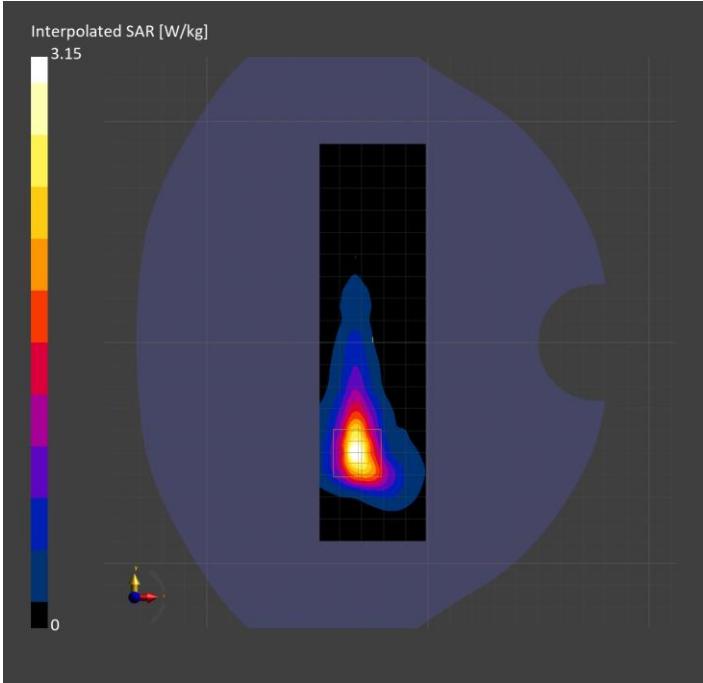
Probe Calibration Date	EX3DV4 - SN7585 2023-04-18	Phantom	Twin-SAM V5.0 (30deg probe tilt)
DAE Calibration Date	DAE4 Sn1797 2023-04-03	TSL Type	HBBL-600-10000
Software Version	16.2.4.2524		

Scan Setup

	Area Scan	Zoom Scan
Grid Extents [mm]	48.0 x 180.0	24.0 x 24.0 x 22.0
Grid Steps [mm]	8.0 x 10.0	4.0 x 4.0 x 1.4
Sensor Surface [mm]	3.0	1.4
Graded Grid	N/A	Yes
M2/M1 [%]		59.0
Dist 3dB Peak [mm]		6.5

Measurement Results

	Area Scan	Zoom Scan
psSAR1g [W/Kg]	0.672	0.732
psSAR10g [W/Kg]	0.228	0.235
Power Drift [dB]	N/A	-0.19



Measurement Report for ISM 2.4 GHz Band: IEEE 802.15.1 Bluetooth (GFSK, DH5), CHEEK

Exposure Conditions

Band	ISM 2.4 GHz Band	TSL Permittivity	40.2
Frequency [MHz] Channel Number	2440.000 19	TSL Conductivity [S/m]	1.72
Group UID	Bluetooth 10670-CAA	Phantom Section TSL	LeftHead HSL
Conversion Factor	7.64	Test Distance [mm]	0.00

Hardware Setup

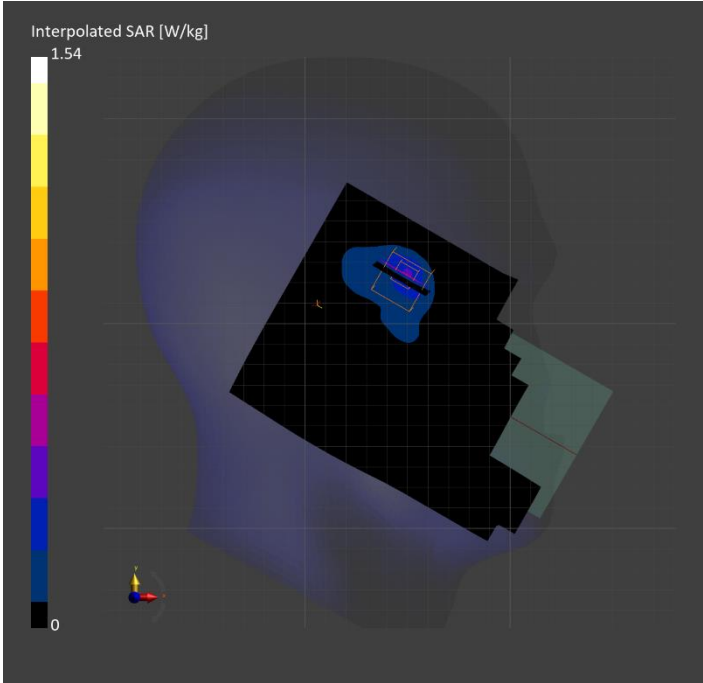
Probe Calibration Date	EX3DV4 - SN7587 2023-04-18	Phantom	Twin-SAM V8.0 (30deg probe tilt)
DAE Calibration Date	DAE4 Sn1239 2023-03-16	TSL Type	HBBL-600-10000
Software Version	16.2.4.2524		

Scan Setup

	Area Scan	Zoom Scan
Grid Extents [mm]	120.0 x 180.0	30.0 x 30.0 x 30.0
Grid Steps [mm]	10.0 x 10.0	5.0 x 5.0 x 1.5
Sensor Surface [mm]	3.0	1.4
Graded Grid	N/A	Yes
M2/M1 [%]		75.3
Dist 3dB Peak [mm]		5.5

Measurement Results

	Area Scan	Zoom Scan
psSAR1g [W/Kg]	0.296	0.608
psSAR10g [W/Kg]	0.143	0.263
Power Drift [dB]	N/A	0.01



Measurement Report for Custom Band: CW, EDGE TOP

Exposure Conditions

Band	Custom Band	TSL Permittivity	56.2
Frequency [MHz] Channel Number	13.600 0	TSL Conductivity [S/m]	0.719
Group UID	CW 0--	Phantom Section TSL	Flat HSL
Conversion Factor	19.03	Test Distance [mm]	0.00

Hardware Setup

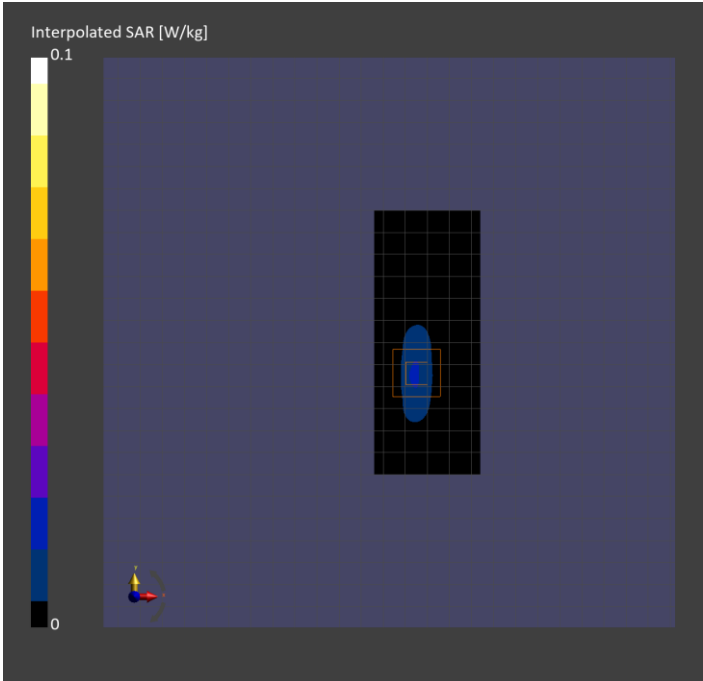
Probe Calibration Date	EX3DV4 - SN3989 2023-01-26	Phantom	ELI V8.0 (20deg probe tilt)
DAE Calibration Date	DAE4 Sn1257 2022-09-20	TSL Type	HBBL4-250V3
Software Version	16.2.4.2524		

Scan Setup

	Area Scan	Zoom Scan
Grid Extents [mm]	48.0 x 120.0	30.0 x 30.0 x 30.0
Grid Steps [mm]	8.0 x 15.0	6.0 x 6.0 x 1.5
Sensor Surface [mm]	3.0	1.4
Graded Grid	N/A	Yes
M2/M1 [%]		60.9
Dist 3dB Peak [mm]		4.8

Measurement Results

	Area Scan	Zoom Scan
psSAR1g [W/Kg]	0.015	0.015
psSAR10g [W/Kg]	0.009	0.005
Power Drift [dB]	N/A	-0.13



Measurement Report for Custom Band: CW, BACK

Exposure Conditions

Band	Custom Band	TSL Permittivity	40.3
Frequency [MHz] Channel Number	1617.600 262391	TSL Conductivity [S/m]	1.24
Group UID	CW 0--	Phantom Section TSL	Flat HSL
Conversion Factor	8.86	Test Distance [mm]	5.00

Hardware Setup

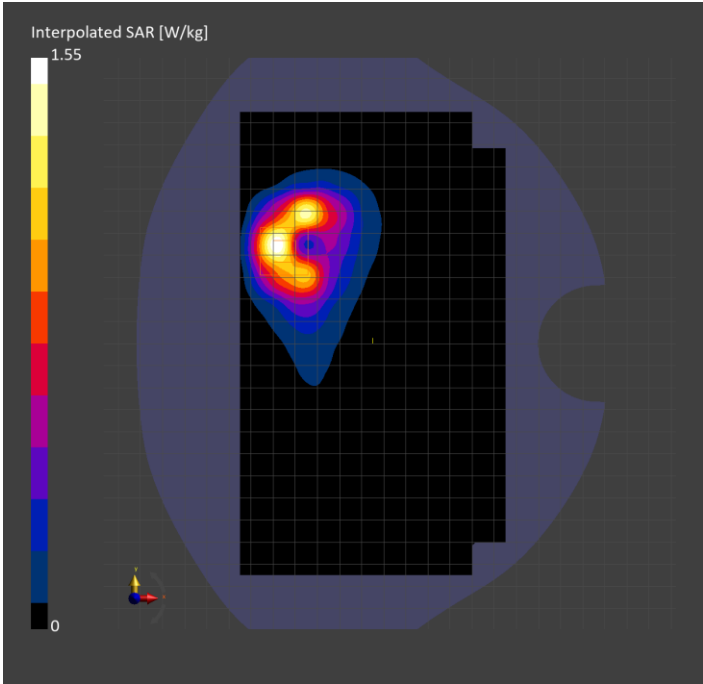
Probe Calibration Date	EX3DV4 - SN3989 2023-01-26	Phantom	Twin-SAM V8.0 (30deg probe tilt)
DAE Calibration Date	DAE4 Sn1257 2022-09-20	TSL Type	HBBL-600-10000
Software Version	16.2.4.2524		

Scan Setup

	Area Scan	Zoom Scan
Grid Extents [mm]	120.0 x 210.0	30.0 x 30.0 x 30.0
Grid Steps [mm]	15.0 x 15.0	6.0 x 6.0 x 1.5
Sensor Surface [mm]	3.0	1.4
Graded Grid	N/A	Yes
M2/M1 [%]		84.1
Dist 3dB Peak [mm]		7.3

Measurement Results

	Area Scan	Zoom Scan
psSAR1g [W/Kg]	0.561	0.776
psSAR10g [W/Kg]	0.295	0.365
Power Drift [dB]	N/A	0.00



Measurement Report for Band 30: LTE-FDD (SC-FDMA, 50% RB, 10 MHz, QPSK)

RBPosition:Mid AntennaCfg:SISO, BACK

Exposure Conditions

Band	Band 30	TSL Permittivity	39.3
Frequency [MHz] Channel Number	2310.000 27710	TSL Conductivity [S/m]	1.74
Group UID	LTE-FDD 10154-CAH	Phantom Section TSL	Flat HSL
Conversion Factor	8.2	Test Distance [mm]	5.00

Hardware Setup

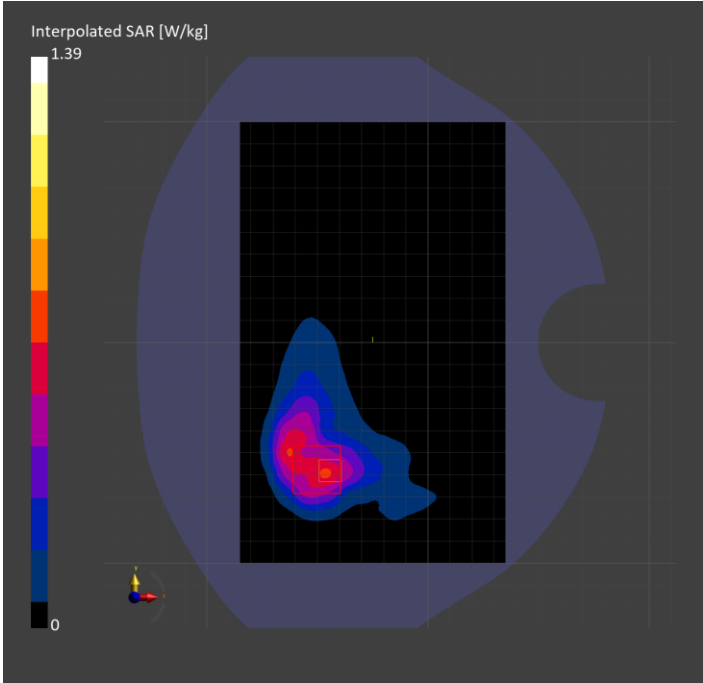
Probe Calibration Date	EX3DV4 - SN7356 2023-03-17	Phantom	Twin-SAM V8.0 (30deg probe tilt)
DAE Calibration Date	DAE4 Sn1798 2023-05-02	TSL Type	HBBL-600-10000
Software Version	16.2.4.2524		

Scan Setup

	Area Scan	Zoom Scan
Grid Extents [mm]	120.0 x 200.0	30.0 x 30.0 x 30.0
Grid Steps [mm]	10.0 x 10.0	5.0 x 5.0 x 1.5
Sensor Surface [mm]	3.0	1.4
Graded Grid	N/A	Yes
M2/M1 [%]		75.3
Dist 3dB Peak [mm]		9.9

Measurement Results

	Area Scan	Zoom Scan
psSAR1g [W/Kg]	0.554	0.545
psSAR10g [W/Kg]	0.308	0.276
Power Drift [dB]	N/A	0.03



Measurement Report for Band 48: LTE-TDD (SC-FDMA, 100% RB, 20 MHz, QPSK, UL Subframe=2,3,4,7,8,9) AntennaCfg:SISO, TILT

Exposure Conditions

Band	Band 48	TSL Permittivity	37.2
Frequency [MHz] Channel Number	3646.700 56207	TSL Conductivity [S/m]	2.94
Group UID	LTE-TDD 10512-AAG	Phantom Section TSL	LeftHead HSL
Conversion Factor	6.66	Test Distance [mm]	0.00

Hardware Setup

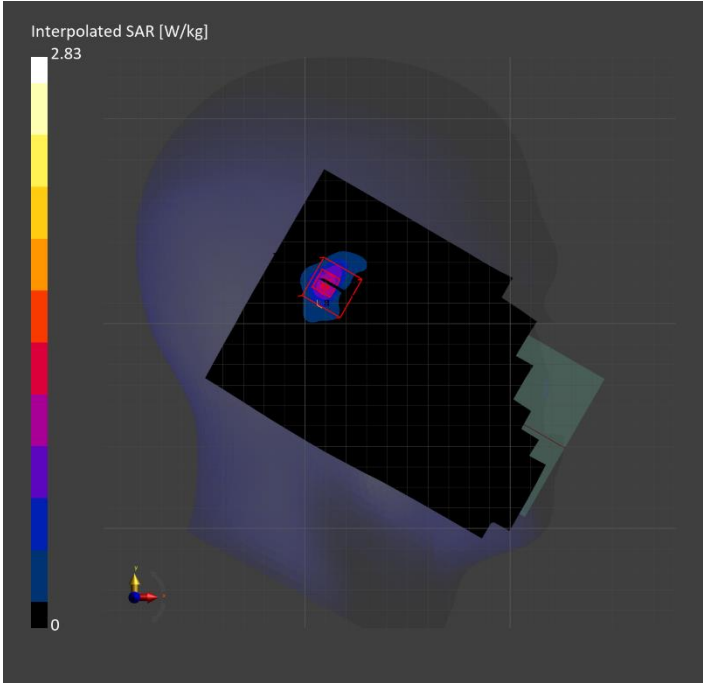
Probe Calibration Date	EX3DV4 - SN3990 2023-02-17	Phantom	Twin-SAM V5.0 (30deg probe tilt)
DAE Calibration Date	DAE4 Sn1545 2023-02-14	TSL Type	HBBL-600-10000
Software Version	16.2.4.2524		

Scan Setup

	Area Scan	Zoom Scan
Grid Extents [mm]	120.0 x 200.0	30.0 x 30.0 x 28.0
Grid Steps [mm]	10.0 x 10.0	5.0 x 5.0 x 1.4
Sensor Surface [mm]	3.0	1.4
Graded Grid	N/A	Yes
M2/M1 [%]		71.2
Dist 3dB Peak [mm]		4.1

Measurement Results

	Area Scan	Zoom Scan
psSAR1g [W/Kg]	0.803	0.878
psSAR10g [W/Kg]	0.259	0.251
Power Drift [dB]	N/A	0.06



Measurement Report for WLAN 2.4GHz: IEEE 802.11b WiFi 2.4 GHz (DSSS, 1 Mbps, 99pc duty cycle), CHEEK

Exposure Conditions

Band	WLAN 2.4GHz	TSL Permittivity	37.8
Frequency [MHz] Channel Number	2412.000 1	TSL Conductivity [S/m]	1.81
Group UID	WLAN 10415-AAA	Phantom Section TSL	LeftHead HSL
Conversion Factor	7.33	Test Distance [mm]	0.00

Hardware Setup

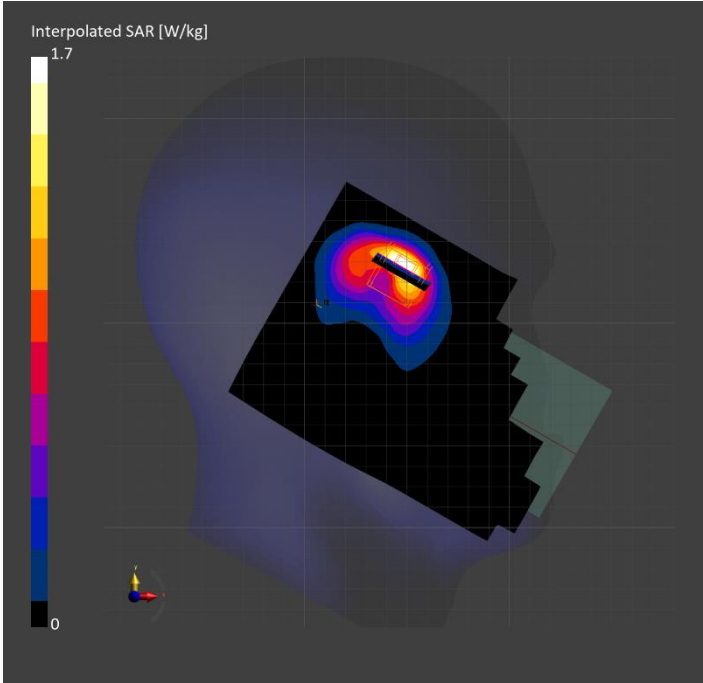
Probe Calibration Date	EX3DV4 - SN3772 2023-02-13	Phantom	Twin-SAM V8.0 (30deg probe tilt)
DAE Calibration Date	DAE4 Sn1359 2023-01-24	TSL Type	HBBL-600-10000
Software Version	16.2.4.2524		

Scan Setup

	Area Scan	Zoom Scan
Grid Extents [mm]	120.0 x 180.0	30.0 x 30.0 x 30.0
Grid Steps [mm]	10.0 x 10.0	5.0 x 5.0 x 1.5
Sensor Surface [mm]	3.0	1.4
Graded Grid	N/A	Yes
M2/M1 [%]		76.5
Dist 3dB Peak [mm]		6.5

Measurement Results

	Area Scan	Zoom Scan
psSAR1g [W/Kg]	0.680	0.723
psSAR10g [W/Kg]	0.322	0.328
Power Drift [dB]	N/A	-0.04



Measurement Report for WLAN 5GHz: IEEE 802.11ac WiFi (80MHz, MCS0, 99pc duty cycle), EDGE LEFT

Exposure Conditions

Band	WLAN 5GHz	TSL Permittivity	34.2
Frequency [MHz] Channel Number	5610.000 122	TSL Conductivity [S/m]	4.87
Group UID	WLAN 10544-AAD	Phantom Section TSL	Flat HSL
Conversion Factor	4.46	Test Distance [mm]	5.00

Hardware Setup

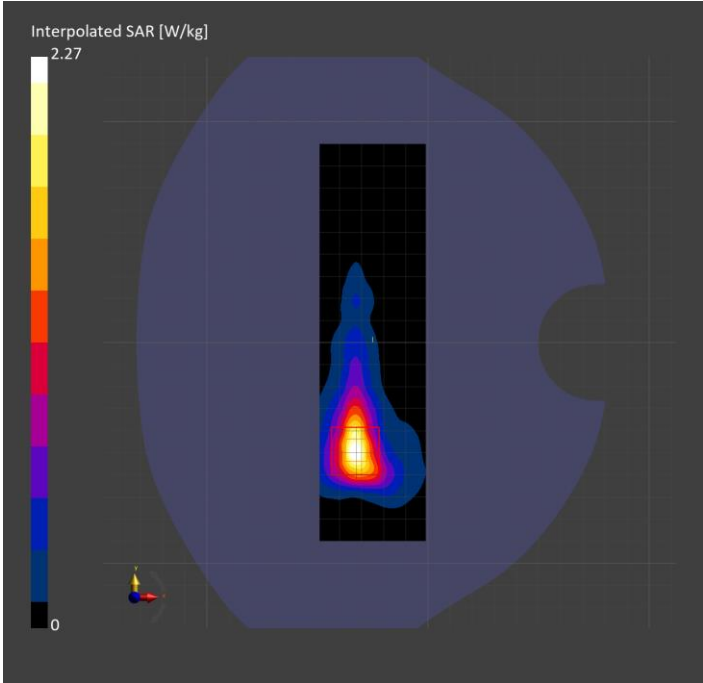
Probe Calibration Date	EX3DV4 - SN7585 2023-04-18	Phantom	Twin-SAM V5.0 (30deg probe tilt)
DAE Calibration Date	DAE4 Sn1797 2023-04-03	TSL Type	HBBL-600-10000
Software Version	16.2.4.2524		

Scan Setup

	Area Scan	Zoom Scan
Grid Extents [mm]	48.0 x 180.0	24.0 x 24.0 x 22.0
Grid Steps [mm]	8.0 x 10.0	4.0 x 4.0 x 1.4
Sensor Surface [mm]	3.0	1.4
Graded Grid	N/A	Yes
M2/M1 [%]		58.0
Dist 3dB Peak [mm]		7.2

Measurement Results

	Area Scan	Zoom Scan
psSAR1g [W/Kg]	0.492	0.525
psSAR10g [W/Kg]	0.171	0.174
Power Drift [dB]	N/A	-0.14



Measurement Report for ISM 2.4 GHz Band: IEEE 802.15.1 Bluetooth (GFSK, DH5), CHEEK

Exposure Conditions

Band	ISM 2.4 GHz Band	TSL Permittivity	40.2
Frequency [MHz] Channel Number	2440.000 19	TSL Conductivity [S/m]	1.72
Group UID	Bluetooth 10670-CAA	Phantom Section TSL	LeftHead HSL
Conversion Factor	7.64	Test Distance [mm]	0.00

Hardware Setup

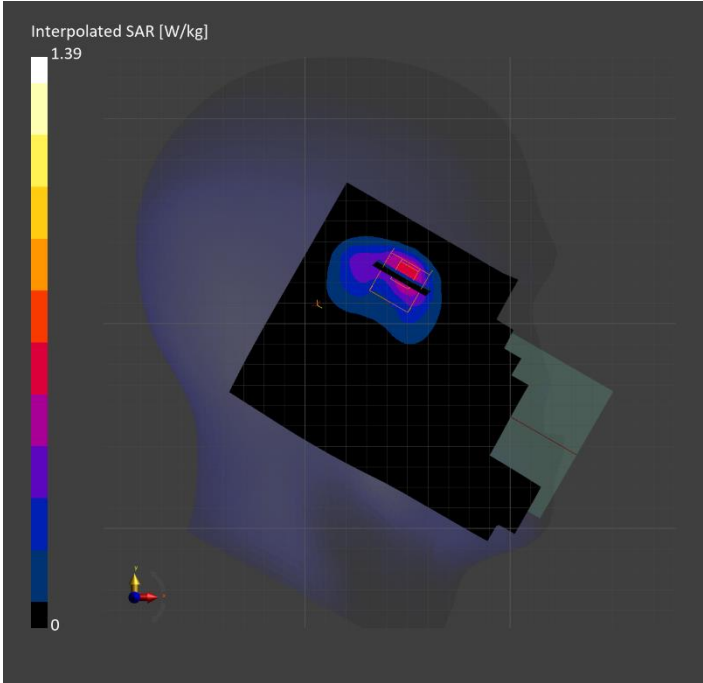
Probe Calibration Date	EX3DV4 - SN7587 2023-04-18	Phantom	Twin-SAM V8.0 (30deg probe tilt)
DAE Calibration Date	DAE4 Sn1239 2023-03-16	TSL Type	HBBL-600-10000
Software Version	16.2.4.2524		

Scan Setup

	Area Scan	Zoom Scan
Grid Extents [mm]	120.0 x 180.0	30.0 x 30.0 x 30.0
Grid Steps [mm]	10.0 x 10.0	5.0 x 5.0 x 1.5
Sensor Surface [mm]	3.0	1.4
Graded Grid	N/A	Yes
M2/M1 [%]		75.6
Dist 3dB Peak [mm]		5.9

Measurement Results

	Area Scan	Zoom Scan
psSAR1g [W/Kg]	0.489	0.562
psSAR10g [W/Kg]	0.234	0.252
Power Drift [dB]	N/A	0.02



Measurement Report for Custom Band: CW, BACK

Exposure Conditions

Band	Custom Band	TSL Permittivity	56.2
Frequency [MHz] Channel Number	13.600 0	TSL Conductivity [S/m]	0.719
Group UID	CW 0--	Phantom Section TSL	Flat HSL
Conversion Factor	19.03	Test Distance [mm]	0.00

Hardware Setup

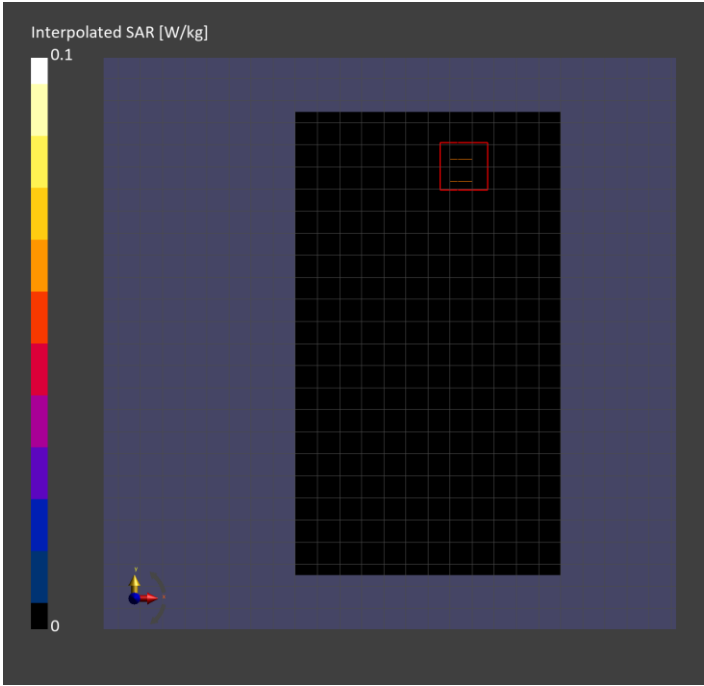
Probe Calibration Date	EX3DV4 - SN3989 2023-01-26	Phantom	ELI V8.0 (20deg probe tilt)
DAE Calibration Date	DAE4 Sn1257 2022-09-20	TSL Type	HBBL4-250V3
Software Version	16.2.4.2524		

Scan Setup

	Area Scan	Zoom Scan
Grid Extents [mm]	120.0 x 210.0	30.0 x 30.0 x 30.0
Grid Steps [mm]	15.0 x 15.0	6.0 x 6.0 x 1.5
Sensor Surface [mm]	3.0	1.4
Graded Grid	N/A	Yes
M2/M1 [%]		68.2
Dist 3dB Peak [mm]		6.2

Measurement Results

	Area Scan	Zoom Scan
psSAR1g [W/Kg]	0.006	0.005
psSAR10g [W/Kg]	0.004	0.002
Power Drift [dB]	N/A	0.18



Measurement Report for Band 30: LTE-FDD (SC-FDMA, 50% RB, 10 MHz, QPSK)

RBPosition:Mid AntennaCfg:SISO, BACK

Exposure Conditions

Band	Band 30	TSL Permittivity	40.6
Frequency [MHz] Channel Number	2310.000 27710	TSL Conductivity [S/m]	1.72
Group UID	LTE-FDD 10154-CAH	Phantom Section TSL	Flat HSL
Conversion Factor	8.2	Test Distance [mm]	5.00

Hardware Setup

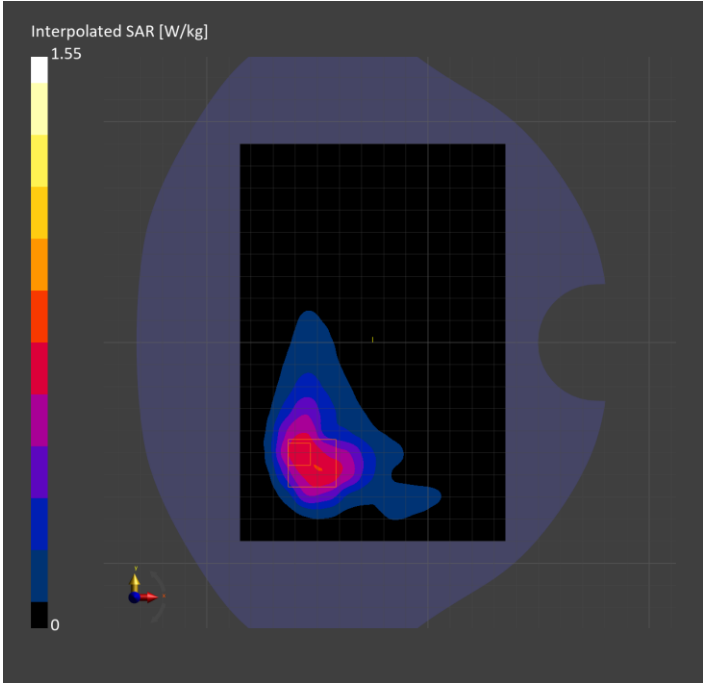
Probe Calibration Date	EX3DV4 - SN7356 2023-03-17	Phantom	Twin-SAM V8.0 (30deg probe tilt)
DAE Calibration Date	DAE4 Sn1798 2023-05-02	TSL Type	HBBL-600-10000
Software Version	16.2.4.2524		

Scan Setup

	Area Scan	Zoom Scan
Grid Extents [mm]	120.0 x 180.0	30.0 x 30.0 x 30.0
Grid Steps [mm]	10.0 x 10.0	5.0 x 5.0 x 1.5
Sensor Surface [mm]	3.0	1.4
Graded Grid	N/A	Yes
M2/M1 [%]		72.3
Dist 3dB Peak [mm]		10.5

Measurement Results

	Area Scan	Zoom Scan
psSAR1g [W/Kg]	0.626	0.639
psSAR10g [W/Kg]	0.350	0.315
Power Drift [dB]	N/A	-0.00



Measurement Report for Band 48: LTE-TDD (SC-FDMA, 100% RB, 20 MHz, QPSK, UL Subframe=2,3,4,7,8,9) AntennaCfg:SISO, TILT

Exposure Conditions

Band	Band 48	TSL Permittivity	37.2
Frequency [MHz] Channel Number	3646.700 56207	TSL Conductivity [S/m]	2.94
Group UID	LTE-TDD 10512-AAG	Phantom Section TSL	LeftHead HSL
Conversion Factor	6.66	Test Distance [mm]	0.00

Hardware Setup

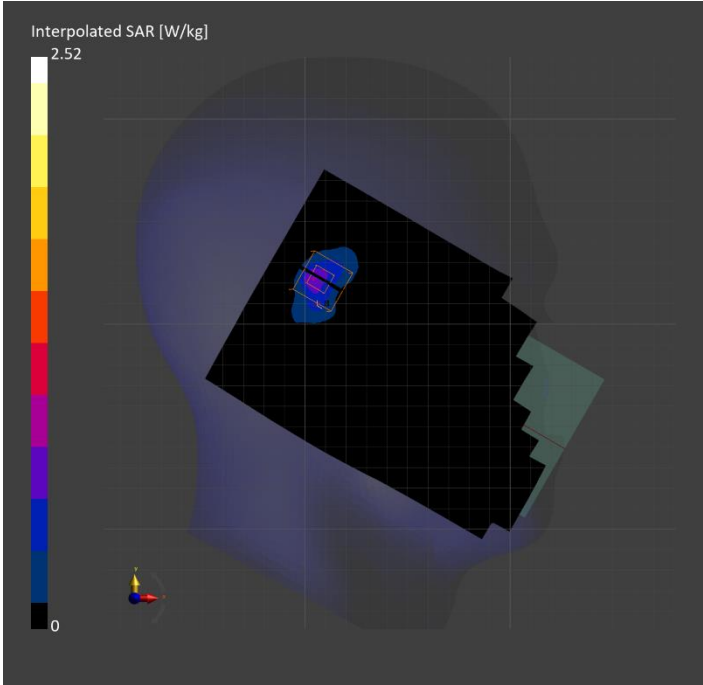
Probe Calibration Date	EX3DV4 - SN3990 2023-02-17	Phantom	Twin-SAM V5.0 (30deg probe tilt)
DAE Calibration Date	DAE4 Sn1545 2023-02-14	TSL Type	HBBL-600-10000
Software Version	16.2.4.2524		

Scan Setup

	Area Scan	Zoom Scan
Grid Extents [mm]	120.0 x 200.0	30.0 x 30.0 x 28.0
Grid Steps [mm]	10.0 x 10.0	5.0 x 5.0 x 1.4
Sensor Surface [mm]	3.0	1.4
Graded Grid	N/A	Yes
M2/M1 [%]		71.9
Dist 3dB Peak [mm]		5.1

Measurement Results

	Area Scan	Zoom Scan
psSAR1g [W/Kg]	0.557	0.796
psSAR10g [W/Kg]	0.214	0.242
Power Drift [dB]	N/A	-0.03



Measurement Report for WLAN 2.4GHz: IEEE 802.11b WiFi 2.4 GHz (DSSS, 1 Mbps, 99pc duty cycle), CHEEK

Exposure Conditions

Band	WLAN 2.4GHz	TSL Permittivity	37.8
Frequency [MHz] Channel Number	2412.000 1	TSL Conductivity [S/m]	1.81
Group UID	WLAN 10415-AAA	Phantom Section TSL	LeftHead HSL
Conversion Factor	7.33	Test Distance [mm]	0.00

Hardware Setup

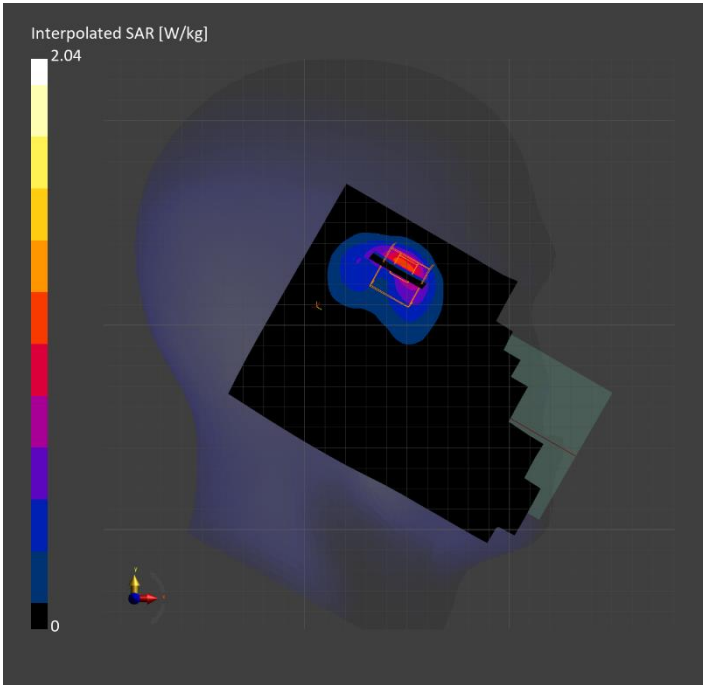
Probe Calibration Date	EX3DV4 - SN3772 2023-02-13	Phantom	Twin-SAM V8.0 (30deg probe tilt)
DAE Calibration Date	DAE4 Sn1359 2023-01-24	TSL Type	HBBL-600-10000
Software Version	16.2.4.2524		

Scan Setup

	Area Scan	Zoom Scan
Grid Extents [mm]	120.0 x 180.0	30.0 x 30.0 x 30.0
Grid Steps [mm]	10.0 x 10.0	5.0 x 5.0 x 1.5
Sensor Surface [mm]	3.0	1.4
Graded Grid	N/A	Yes
M2/M1 [%]		75.6
Dist 3dB Peak [mm]		6.0

Measurement Results

	Area Scan	Zoom Scan
psSAR1g [W/Kg]	0.797	0.833
psSAR10g [W/Kg]	0.359	0.362
Power Drift [dB]	N/A	-0.04



Measurement Report for WLAN 5GHz: IEEE 802.11ac WiFi (80MHz, MCS0, 99pc duty cycle), EDGE LEFT

Exposure Conditions

Band	WLAN 5GHz	TSL Permittivity	34.2
Frequency [MHz] Channel Number	5610.000 122	TSL Conductivity [S/m]	4.87
Group UID	WLAN 10544-AAD	Phantom Section TSL	Flat HSL
Conversion Factor	4.46	Test Distance [mm]	5.00

Hardware Setup

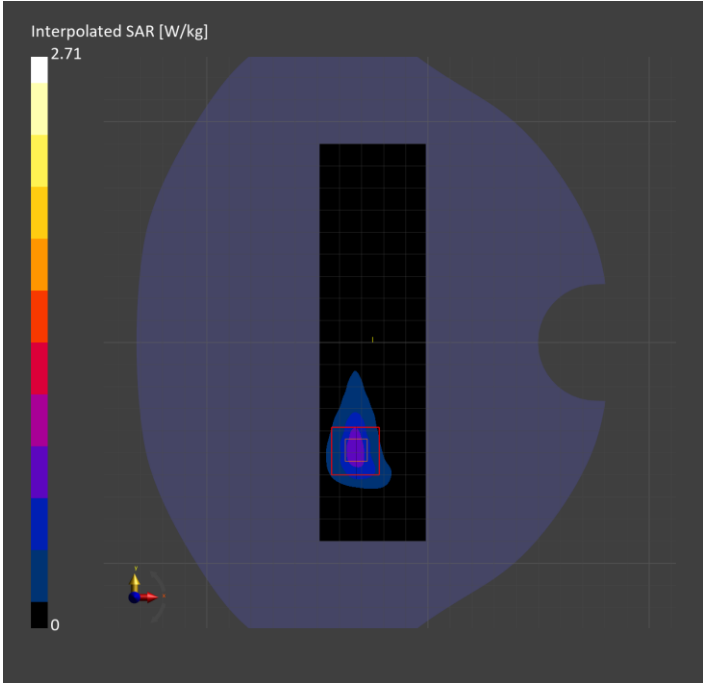
Probe Calibration Date	EX3DV4 - SN7585 2023-04-18	Phantom	Twin-SAM V5.0 (30deg probe tilt)
DAE Calibration Date	DAE4 Sn1797 2023-04-03	TSL Type	HBBL-600-10000
Software Version	16.2.4.2524		

Scan Setup

	Area Scan	Zoom Scan
Grid Extents [mm]	48.0 x 180.0	24.0 x 24.0 x 22.0
Grid Steps [mm]	8.0 x 10.0	4.0 x 4.0 x 1.4
Sensor Surface [mm]	3.0	1.4
Graded Grid	N/A	Yes
M2/M1 [%]		58.1
Dist 3dB Peak [mm]		6.5

Measurement Results

	Area Scan	Zoom Scan
psSAR1g [W/Kg]	0.588	0.624
psSAR10g [W/Kg]	0.199	0.203
Power Drift [dB]	N/A	0.12



Measurement Report for ISM 2.4 GHz Band: IEEE 802.15.1 Bluetooth (GFSK, DH5), CHEEK

Exposure Conditions

Band	ISM 2.4 GHz Band	TSL Permittivity	40.2
Frequency [MHz] Channel Number	2440.000 19	TSL Conductivity [S/m]	1.72
Group UID	Bluetooth 10670-CAA	Phantom Section TSL	LeftHead HSL
Conversion Factor	7.64	Test Distance [mm]	0.00

Hardware Setup

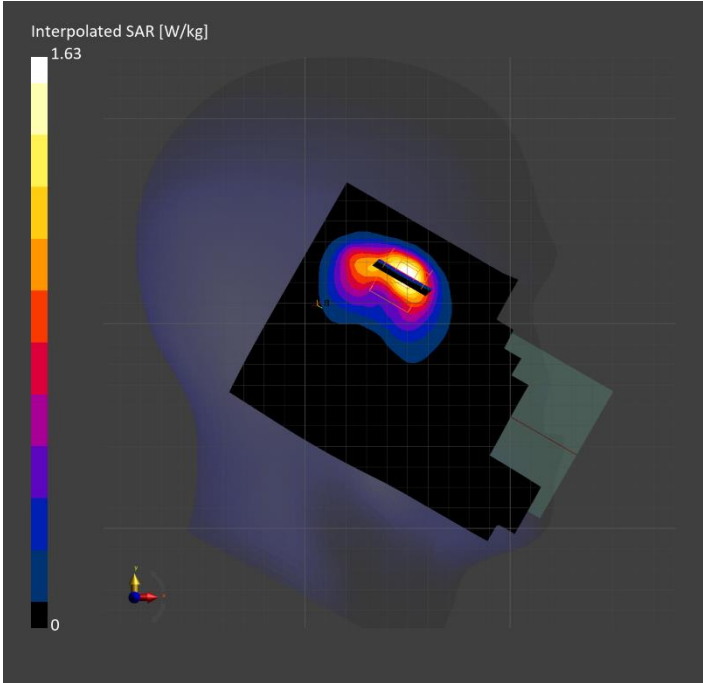
Probe Calibration Date	EX3DV4 - SN7587 2023-04-18	Phantom	Twin-SAM V8.0 (30deg probe tilt)
DAE Calibration Date	DAE4 Sn1239 2023-03-16	TSL Type	HBBL-600-10000
Software Version	16.2.4.2524		

Scan Setup

	Area Scan	Zoom Scan
Grid Extents [mm]	120.0 x 180.0	30.0 x 30.0 x 30.0
Grid Steps [mm]	10.0 x 10.0	5.0 x 5.0 x 1.5
Sensor Surface [mm]	3.0	1.4
Graded Grid	N/A	Yes
M2/M1 [%]		75.6
Dist 3dB Peak [mm]		6.1

Measurement Results

	Area Scan	Zoom Scan
psSAR1g [W/Kg]	0.572	0.648
psSAR10g [W/Kg]	0.270	0.284
Power Drift [dB]	N/A	-0.00



Measurement Report for Custom Band: CW, EDGE TOP

Exposure Conditions

Band	Custom Band	TSL Permittivity	56.2
Frequency [MHz] Channel Number	13.600 0	TSL Conductivity [S/m]	0.719
Group UID	CW 0--	Phantom Section TSL	Flat HSL
Conversion Factor	19.03	Test Distance [mm]	0.00

Hardware Setup

Probe Calibration Date	EX3DV4 - SN3989 2023-01-26	Phantom	ELI V8.0 (20deg probe tilt)
DAE Calibration Date	DAE4 Sn1257 2022-09-20	TSL Type	HBBL4-250V3
Software Version	16.2.4.2524		

Scan Setup

	Area Scan	Zoom Scan
Grid Extents [mm]	48.0 x 120.0	30.0 x 30.0 x 30.0
Grid Steps [mm]	8.0 x 15.0	6.0 x 6.0 x 1.5
Sensor Surface [mm]	3.0	1.4
Graded Grid	N/A	A=Yes
M2/M1 [%]		60.9
Dist 3dB Peak [mm]		6.0

Measurement Results

	Area Scan	Zoom Scan
psSAR1g [W/Kg]	0.016	0.016
psSAR10g [W/Kg]	0.01	0.005
Power Drift [dB]	N/A	-0.08

